



Safe Access for All

Elie Ghoussoub



PRESENTER

Elie Ghoussoub

Health, Safety & Accessibility Consultant – WSP | Parsons Brinckerhoff

Elie Ghoussoub is a Principal Consultant for health, safety and accessibility for the built environment at WSP | Parsons Brinckerhoff in the Middle East. Elie has conducted many accessibility audits and design reviews for commercial and public buildings. Elie has presented at a number of government forums, appeared in regional trade publications and continues to provide safety and universal accessibility advice to private and public clients.

LEARNING OBJECTIVES

- **Understanding the different definitions of disability and the complexities of the scope of the topic.**
- **Awareness of the general types of disability and the prevalence of disability within society.**
- **Outlining the state accessibility in buildings in the region based on a survey conducted recently.**
- **Understanding the main technical accessibility features of buildings.**

The purpose of this presentation is to convey technical knowledge to the conference participants.

The presentation also contains slides with text that summarises the content of the presentation and the main learning objectives.

These may be used to update CPD records for relevant organisations including the Chartered Institute of Building (CIOB).

What is accessibility?



UN-CRPD DEFINITIONS

People with Disabilities

“... those who have long-term physical, mental, intellectual or sensory impairments which in interaction with various barriers may hinder their full and effective participation in society on an equal basis with others.”

Universal Design-Accessibility

“Is the design of products, environments, programs and services to be usable by all people, to the greatest extent possible, without the need for adaptation or specialized design”.

PEOPLE WITH DISABILITIES

Athletes



Employees



PEOPLE WITH DISABILITIES

Clients



People



NUMBERS

- 1 in 4 of today's 20 year-olds will have some form of disability before they retire
- 15-20% of the world's population has a disability
- Hearing disabilities
- Mobility impairments
 - Parkinson's
- Vision impairments
- Cognitive impairments
 - Autism
 - Tourette's
 - ADHD
 - Dementia

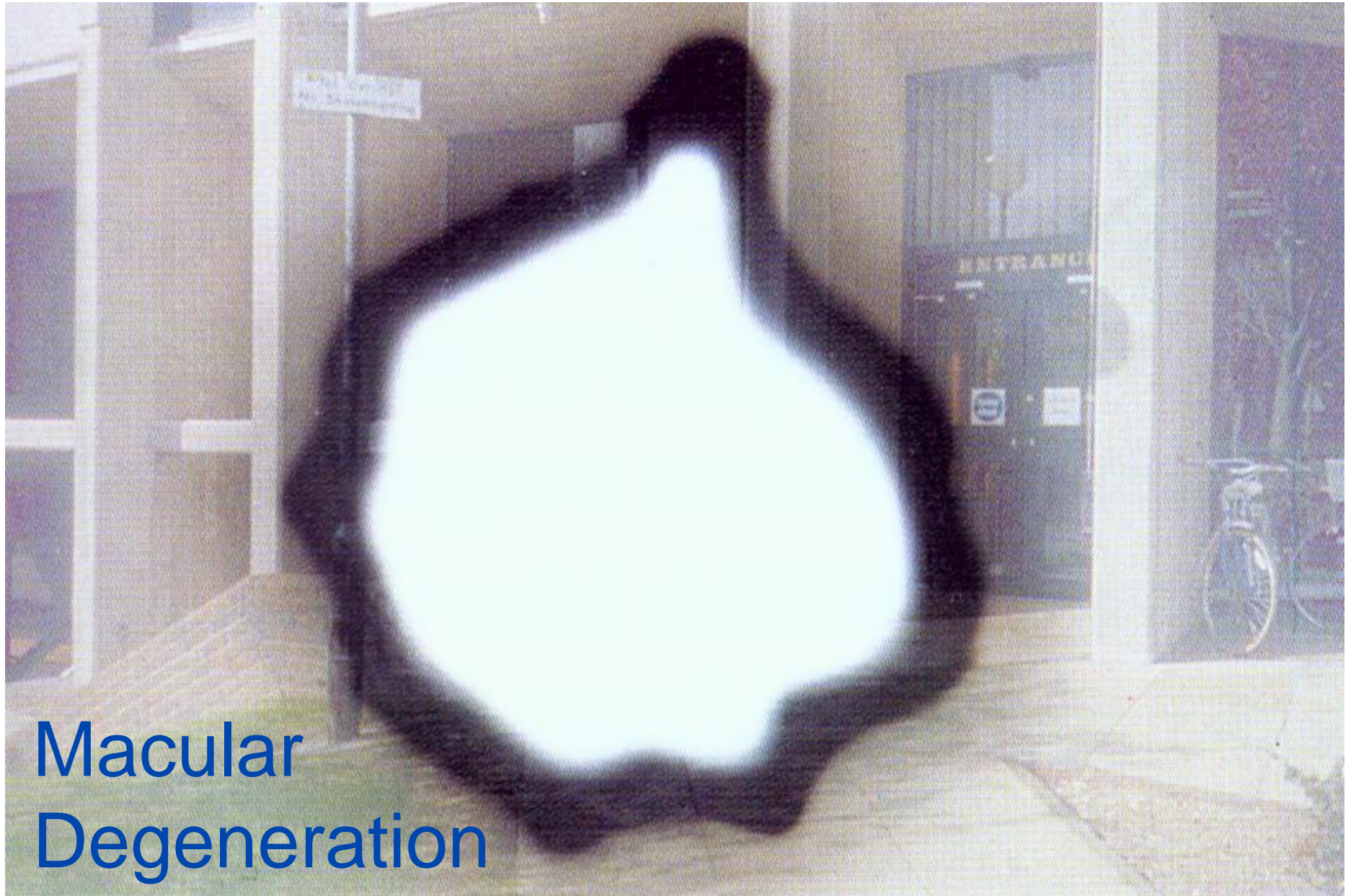


VISUAL IMPAIRMENTS:

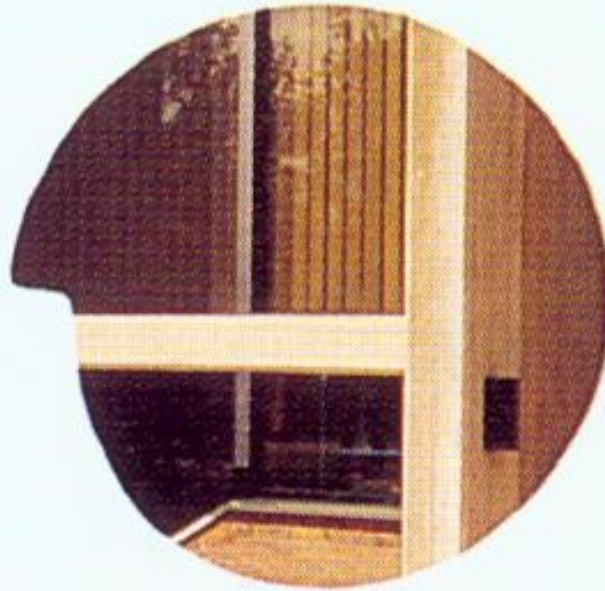




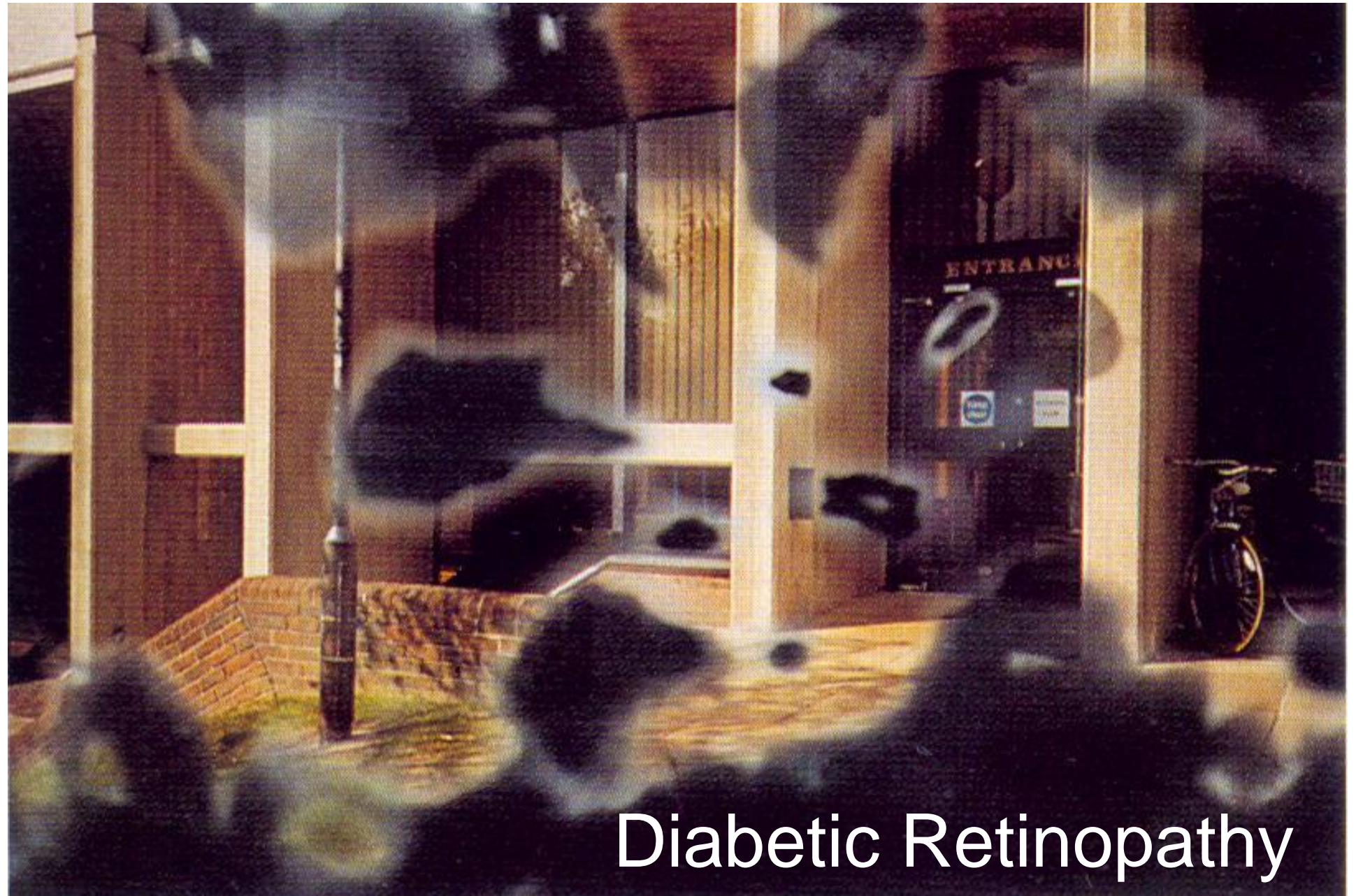
CATARACT



Macular
Degeneration



Tunnel Vision



Diabetic Retinopathy

Accessibility in the Region



LEGISLATIVE FRAMEWORKS

→ **Convention on the Rights of Persons with Disabilities (CRPD)**

- UAE
- KSA
- Qatar
- Bahrain
- Oman
- Kuwait

→ Change in approach

- Charity/Medical Model
- Equality Model

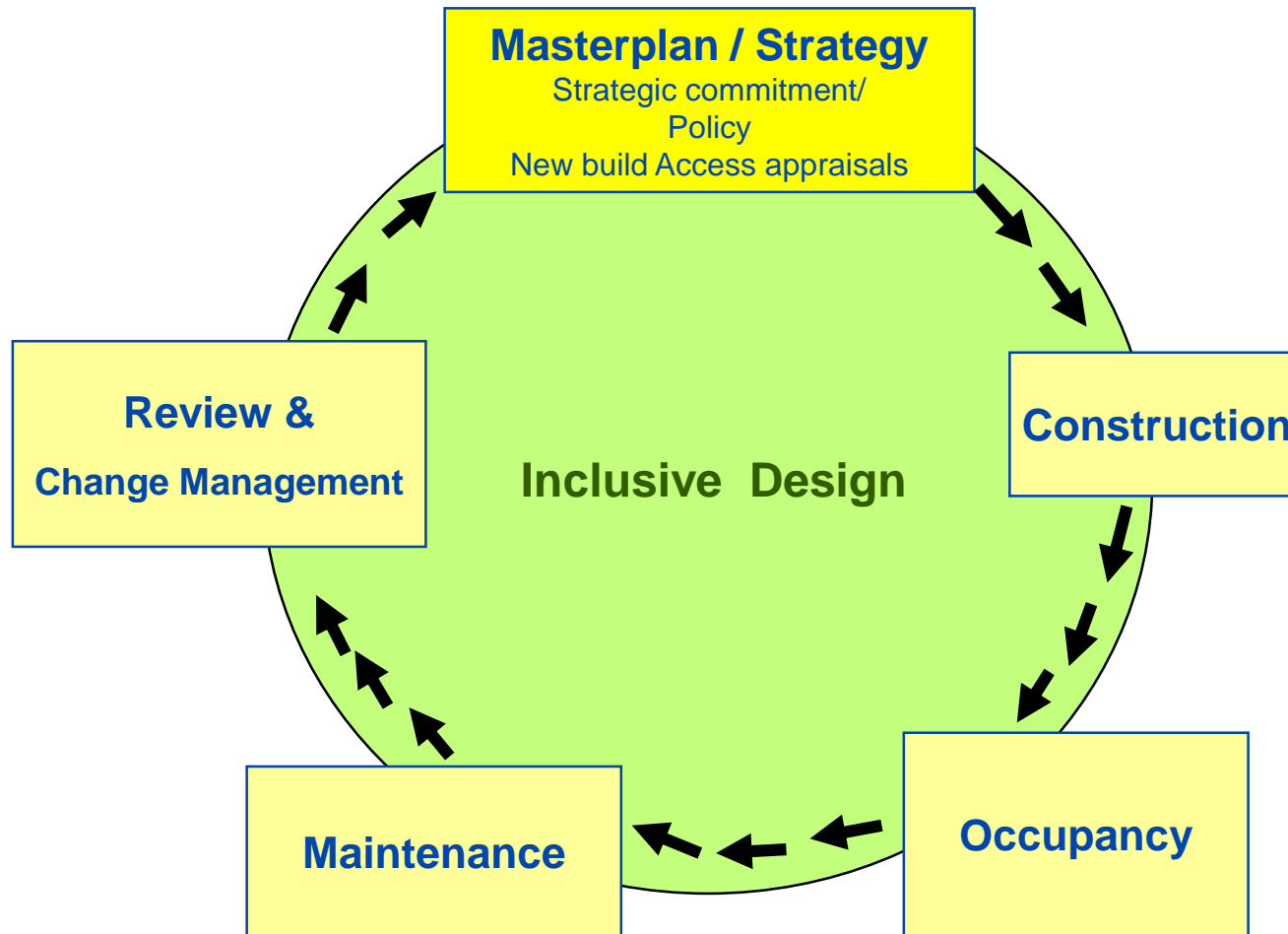
→ Laws & Regulations



Accessibility In Practice



ACCESSIBILITY CONTINUUM



ACCESSIBILITY IN BUILDINGS

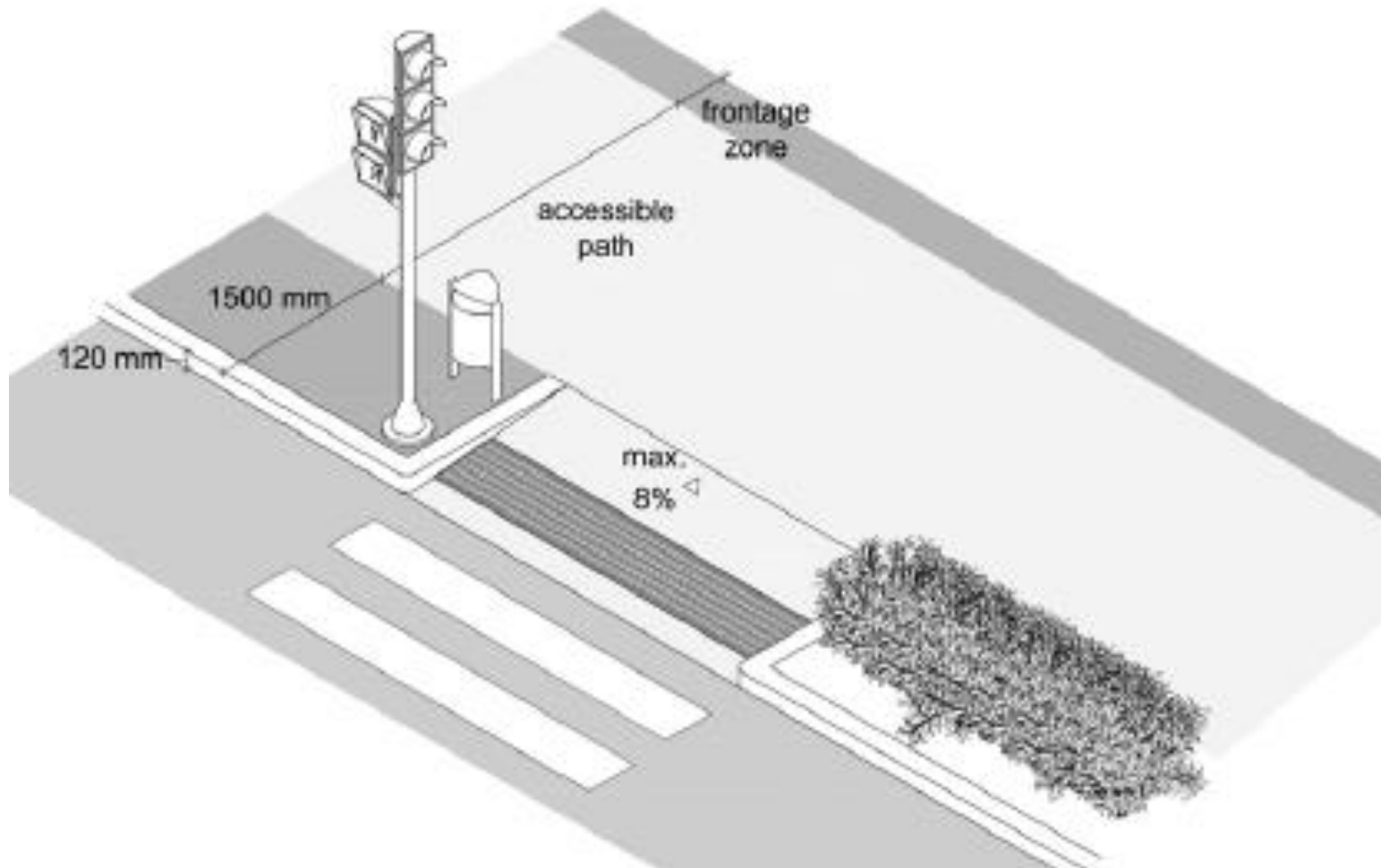
- Access to buildings
- Access into buildings
- Horizontal circulation
- Vertical circulation
- Facilities in buildings
- Emergency evacuation



THE ACCESSIBLE JOURNEY



ACCESS TO BUILDINGS-ACCESSIBLE PATH



ACCESS TO BUILDINGS



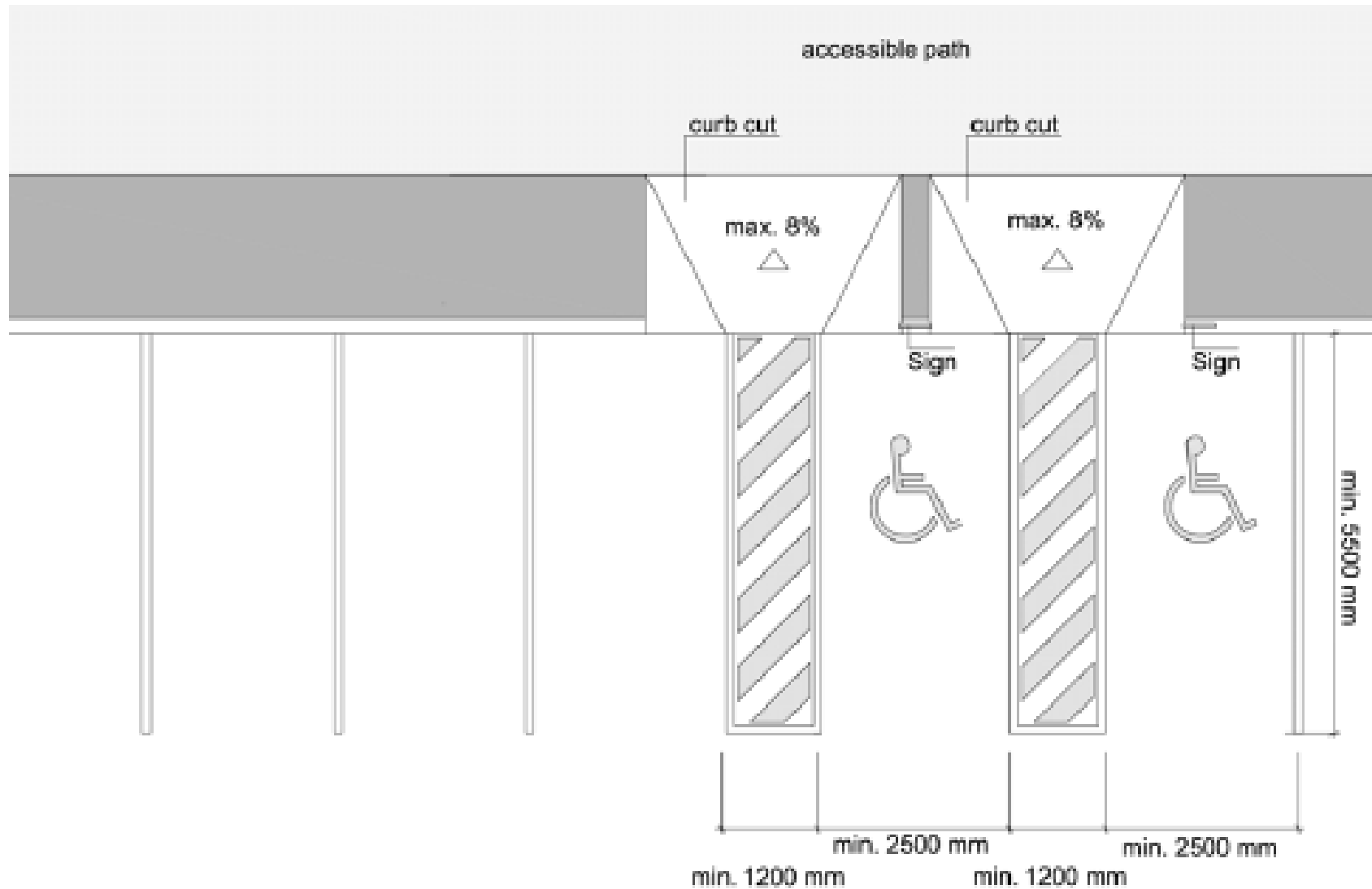
ACCESS TO BUILDINGS



ACCESS TO BUILDINGS



ACCESS TO BUILDINGS-PARKING



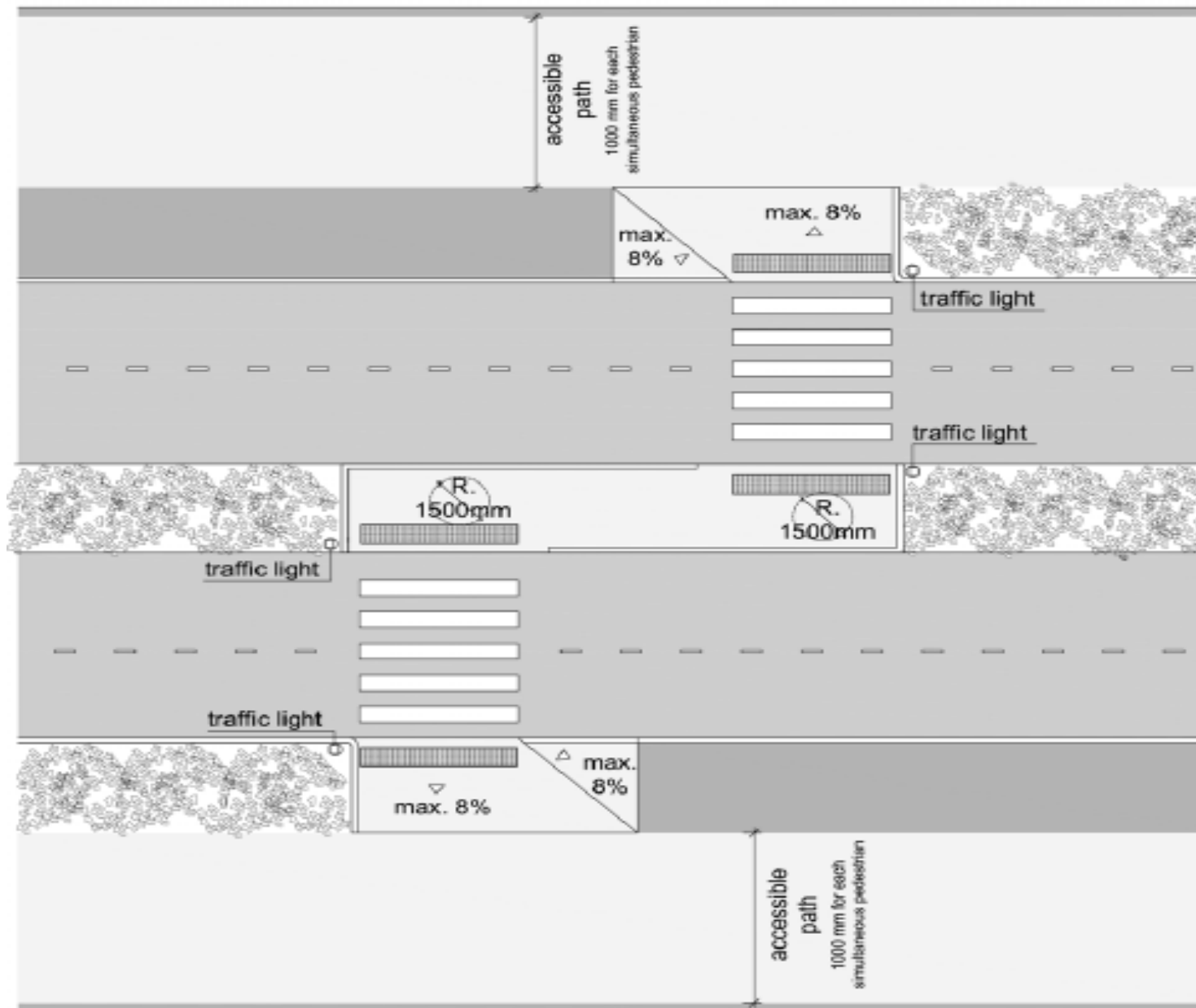
ACCESS TO BUILDINGS



TERMINOLOGY



ACCESS TO BUILDINGS-CROSSING POINTS



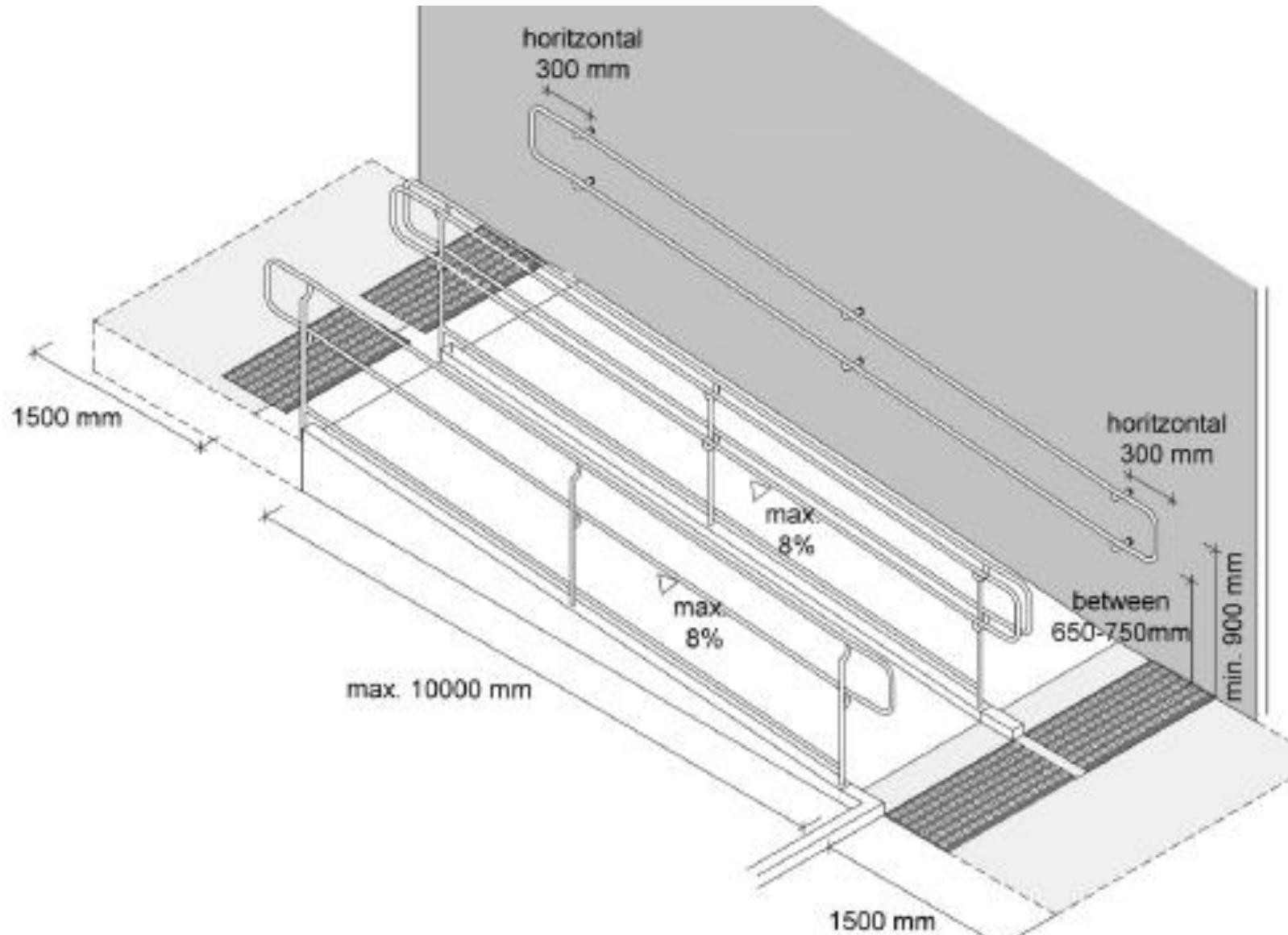
ACCESS TO BUILDINGS



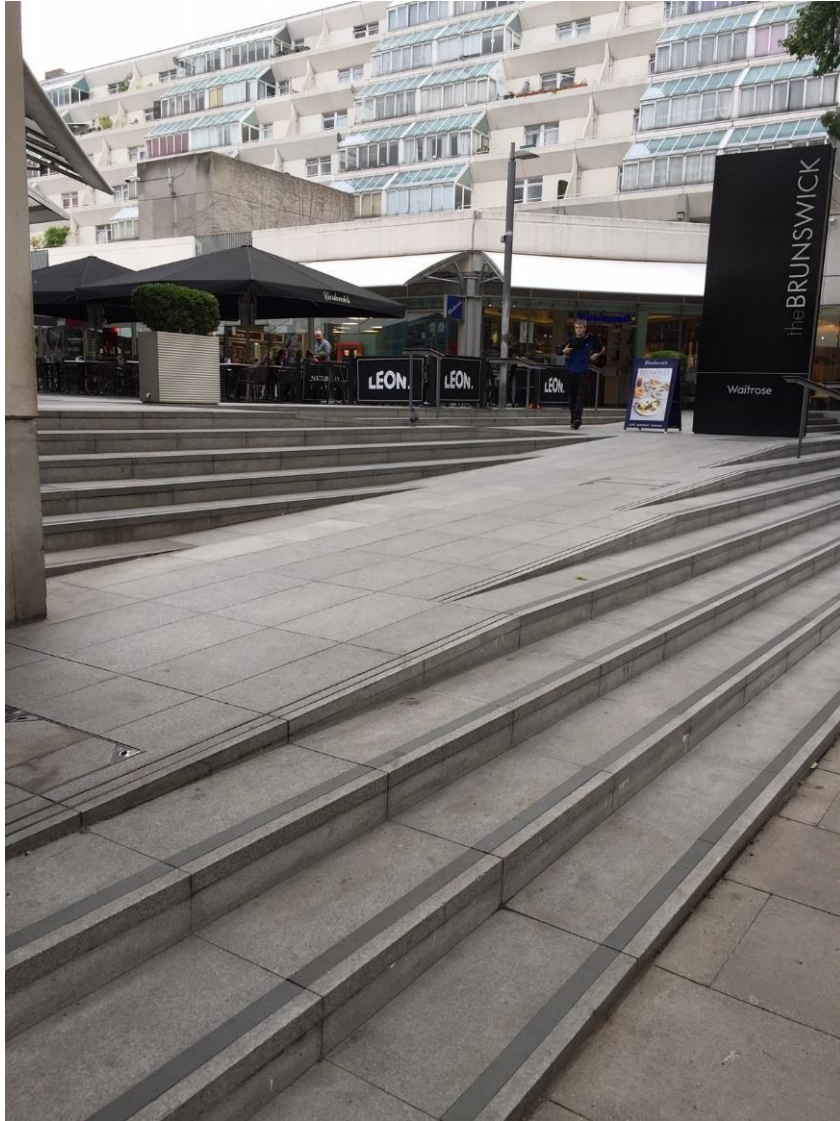
ACCESS INTO BUILDINGS



ACCESS INTO BUILDINGS-RAMPS



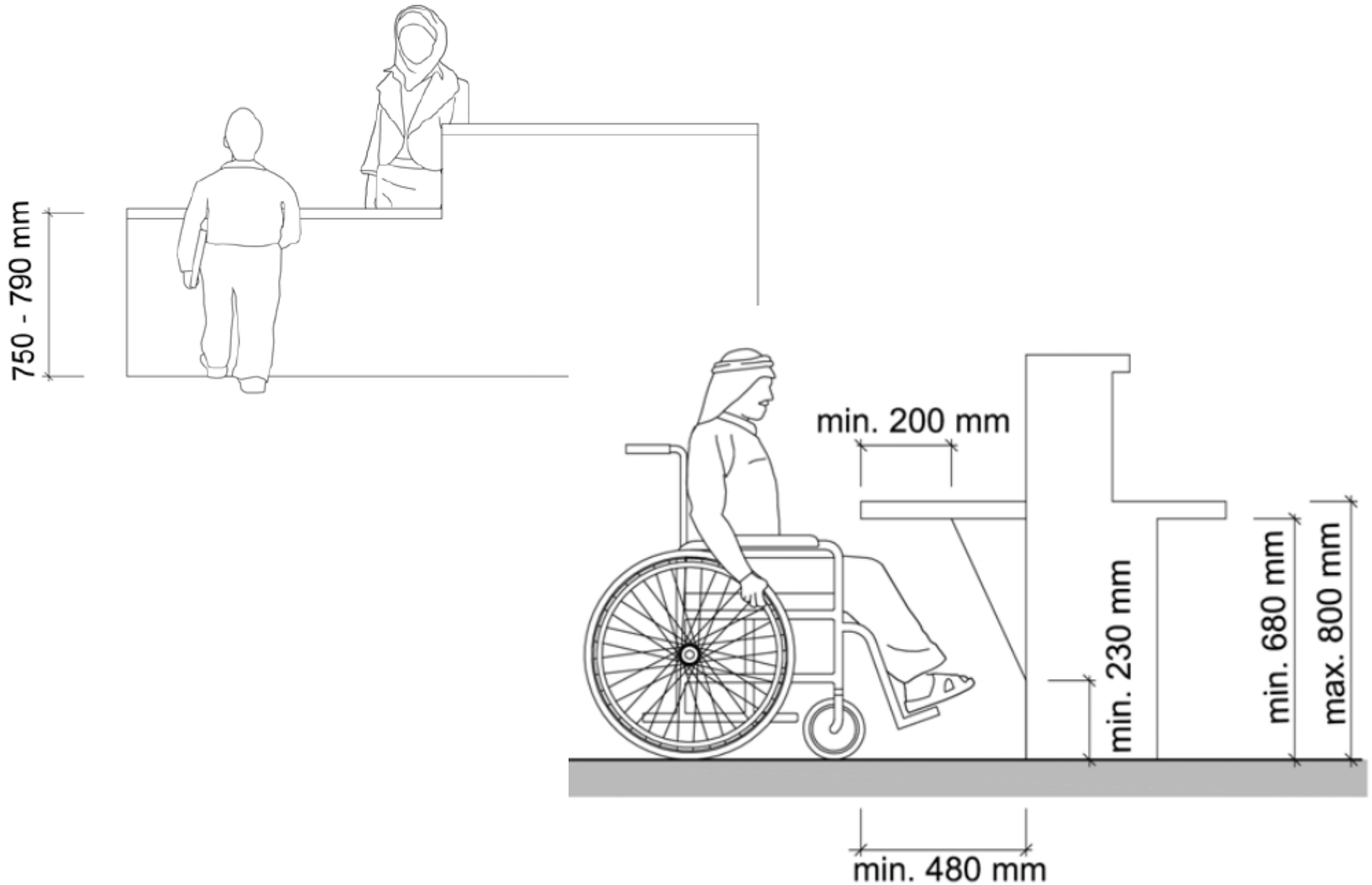
ACCESS INTO BUILDINGS



ACCESS INTO BUILDINGS



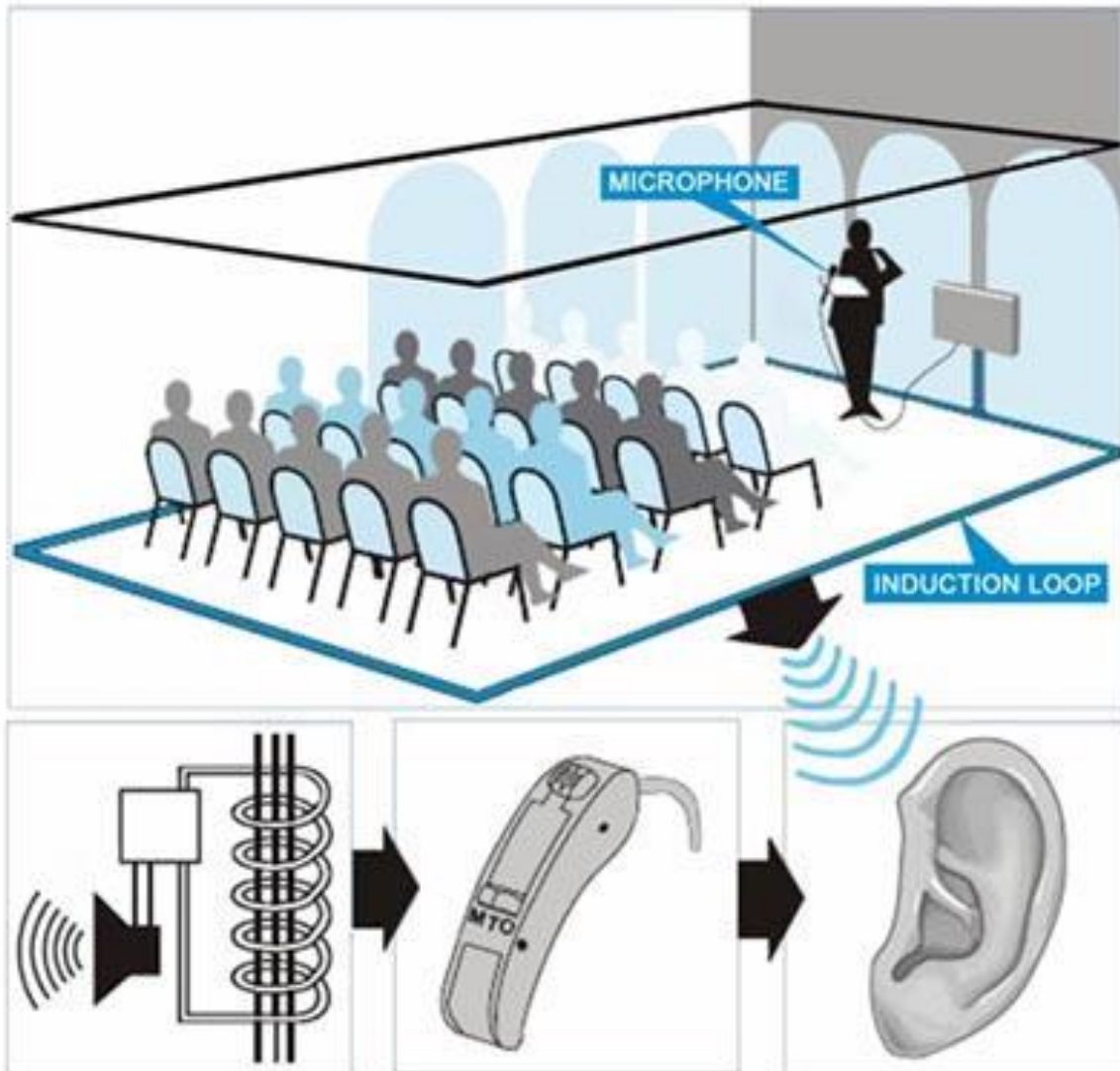
ACCESS INTO BUILDINGS-RECEPTIONS



ACCESS INTO BUILDING



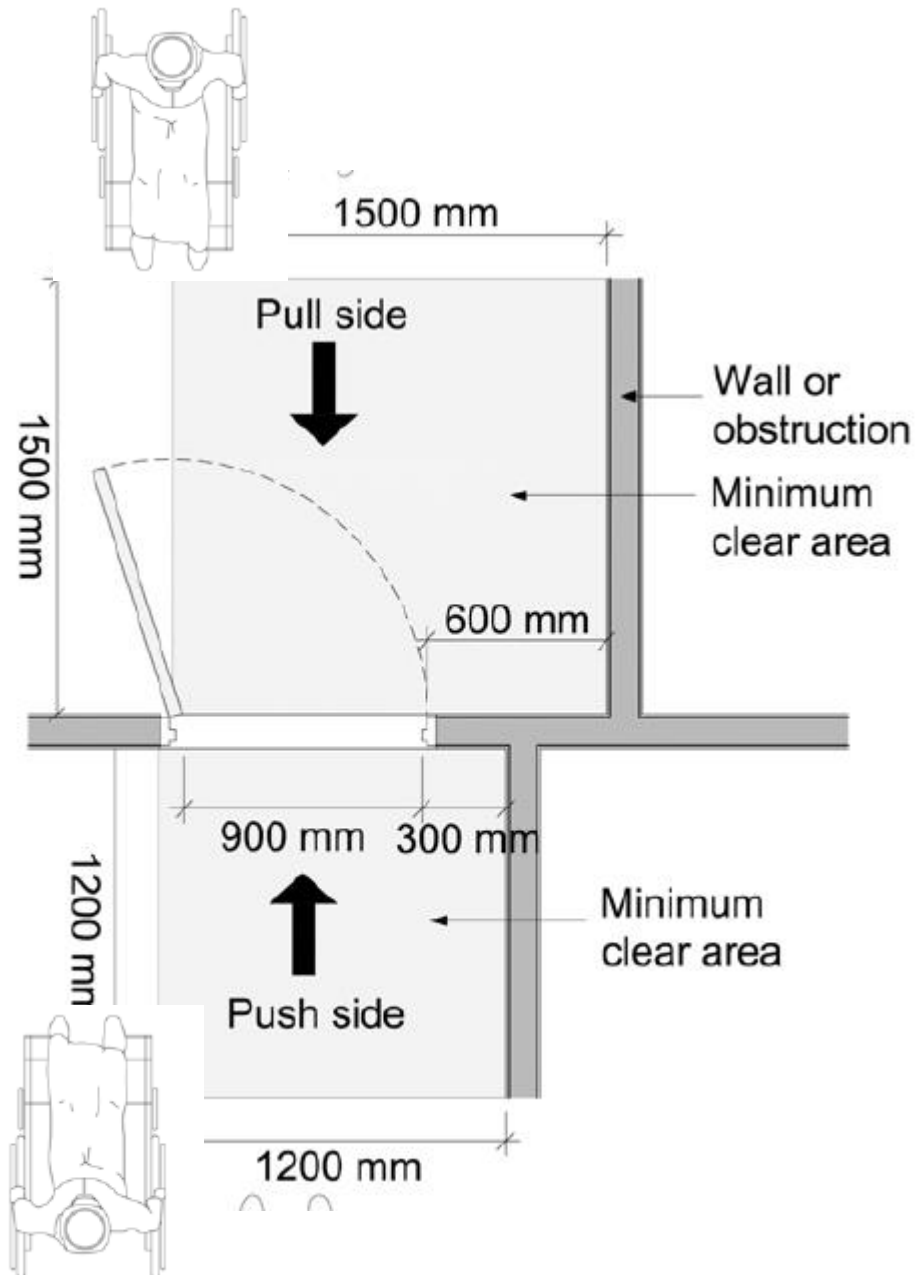
ACCESS INTO BUILDINGS-RECEPTIONS



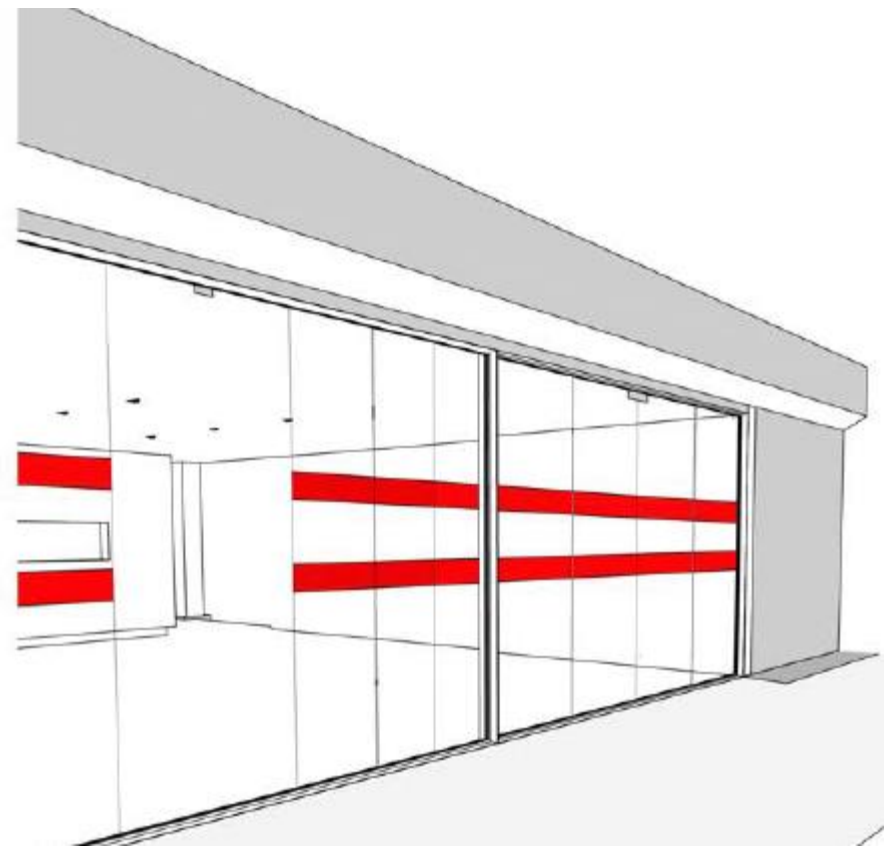
Hearing Loop
Switch hearing aid to T-coil



HORIZONTAL CIRCULATION-DOORS



Manifestations



HORIZONTAL CIRCULATION



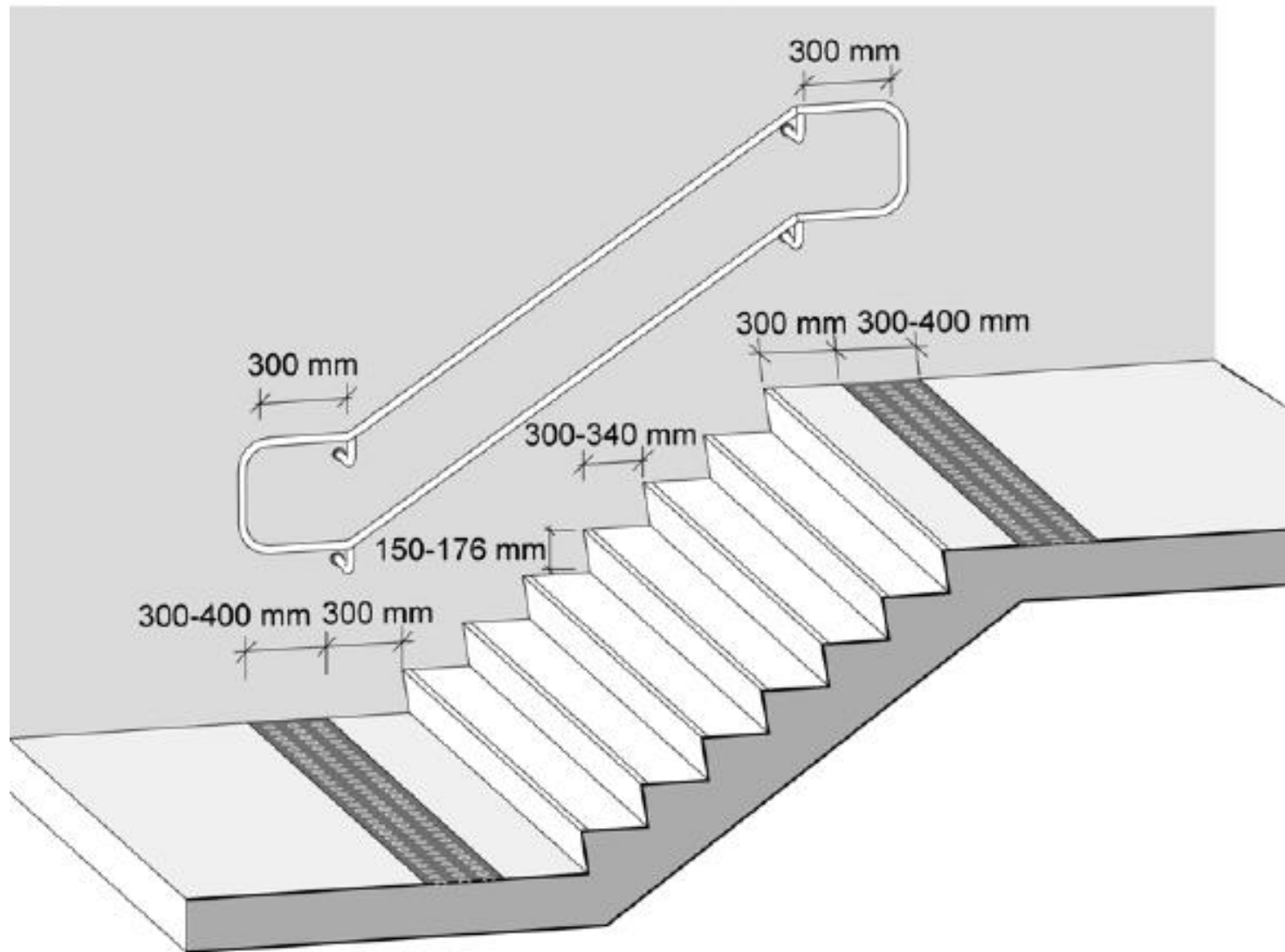
HORIZONTAL CIRCULATION



HORIZONTAL CIRCULATION



VERTICAL CIRCULATION-STAIRS



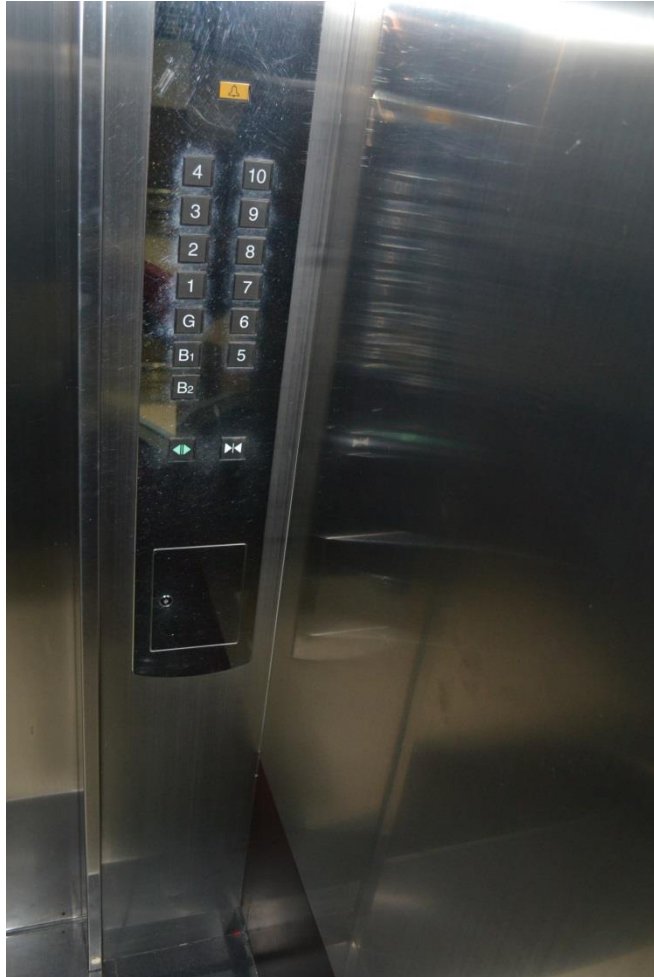
VERTICAL CIRCULATION



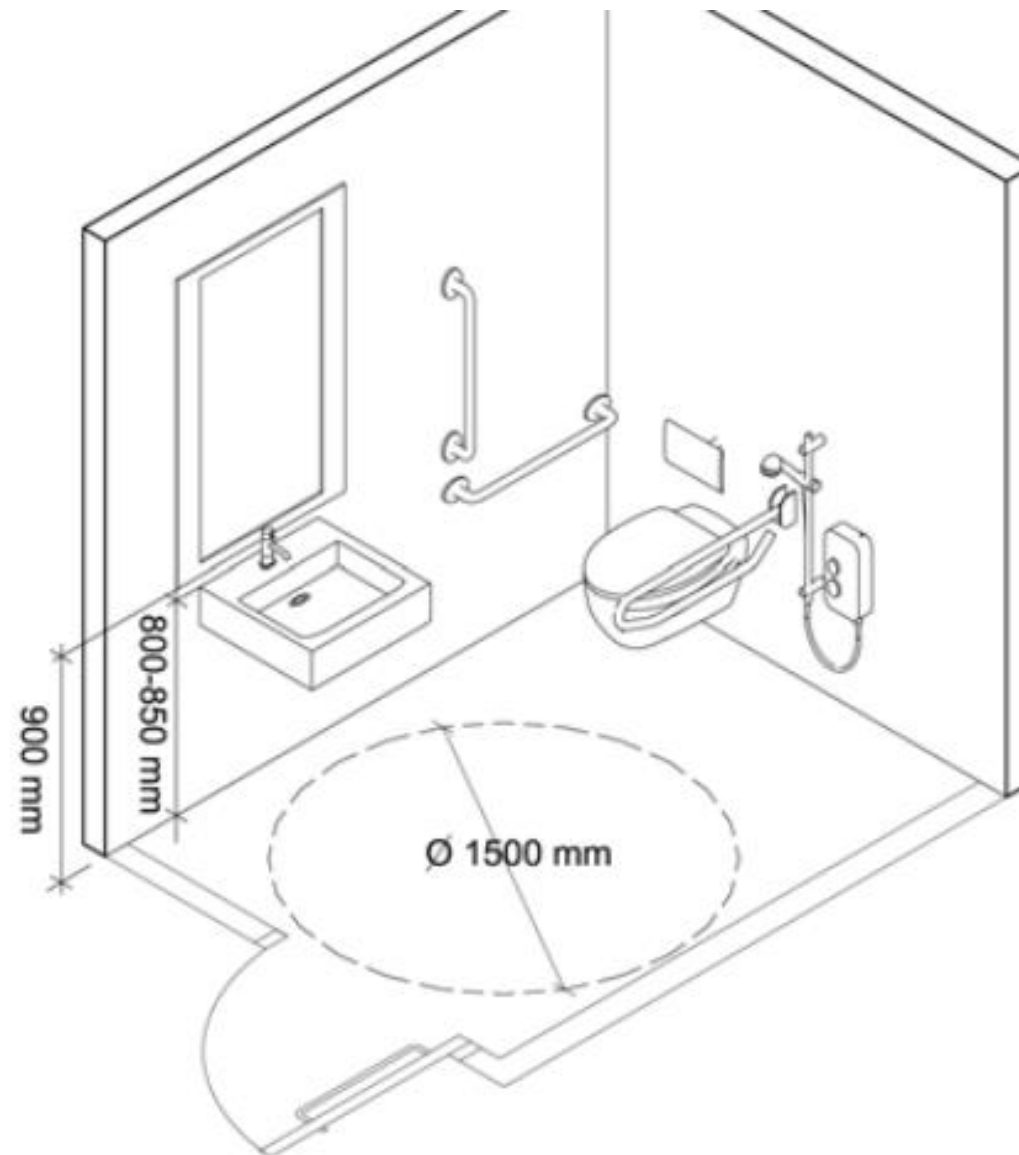
VERTICAL CIRCULATION



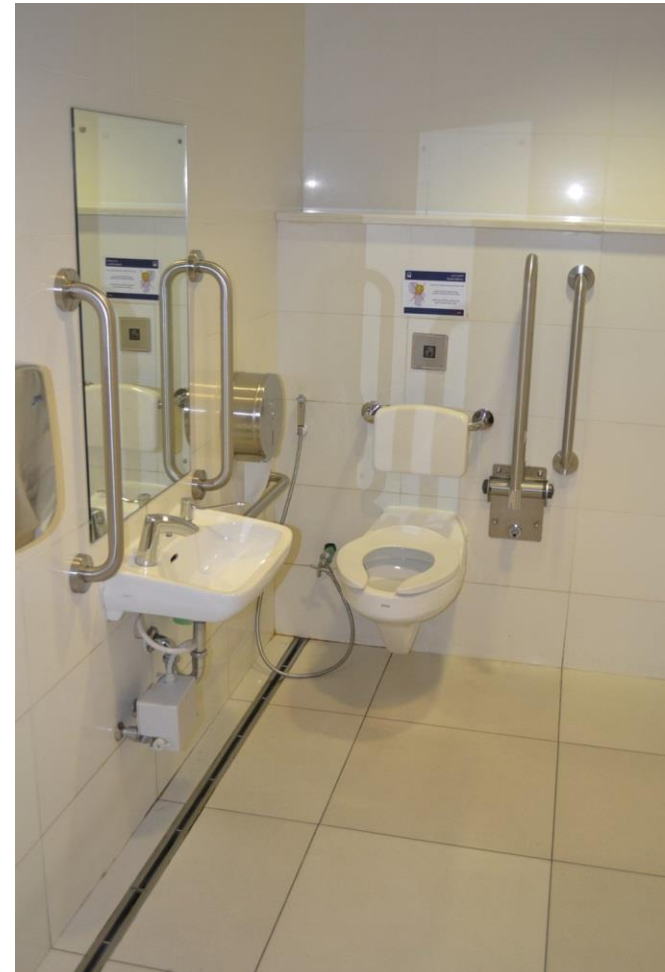
VERTICAL CIRCULATION-ELEVATORS



FACILITIES IN BUILDINGS-TOILETS



FACILITIES IN BUILDINGS



FACILITIES IN BUILDINGS



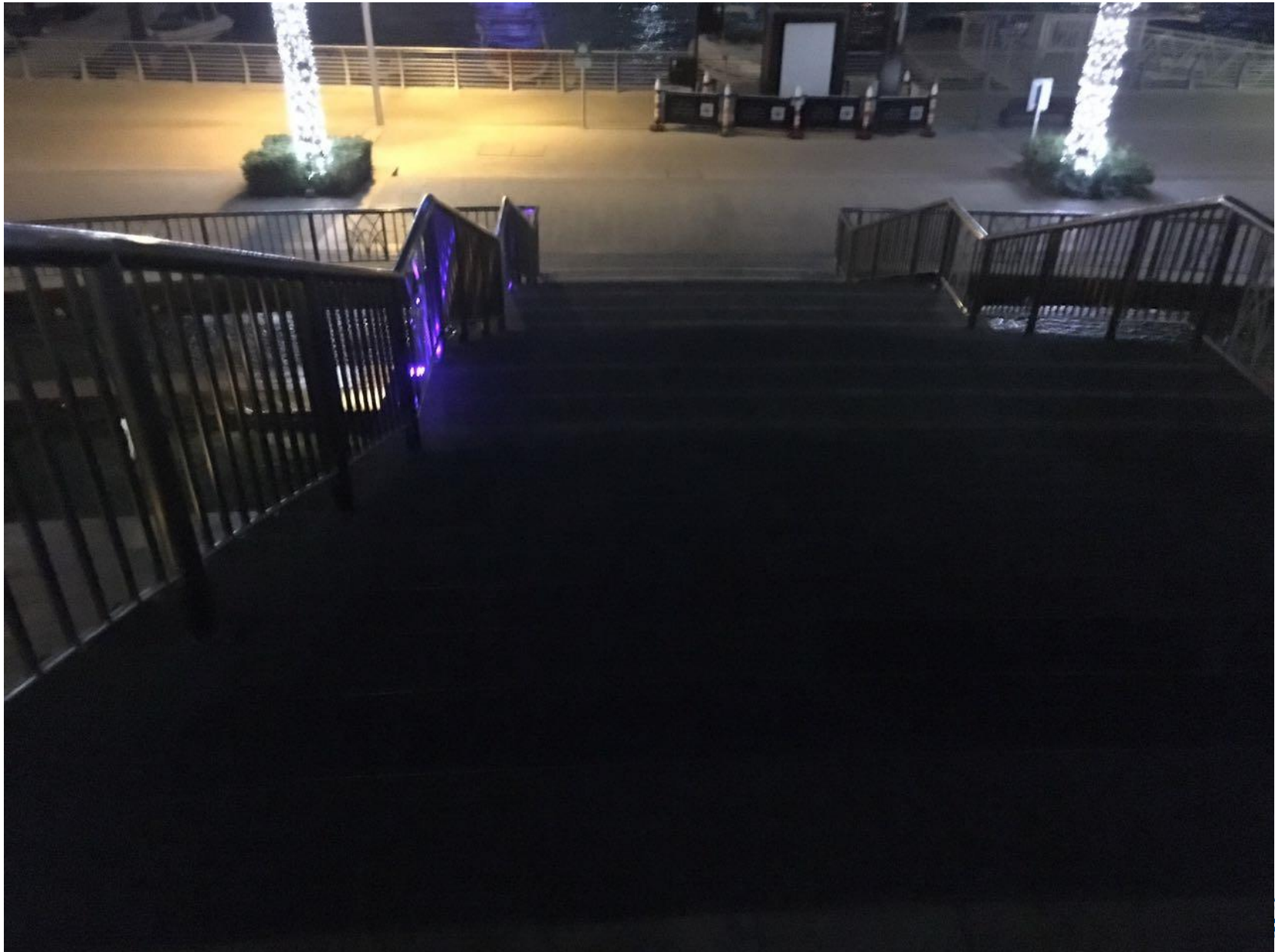
FACILITIES IN BUILDINGS



FINISHES & LIGHTING



FINISHES & LIGHTING



EMERGENCY EVACUATION

How do you get people with disabilities out of a building?

EMERGENCY EVACUATION



THANK YOU

