

Safety Design in Buildings



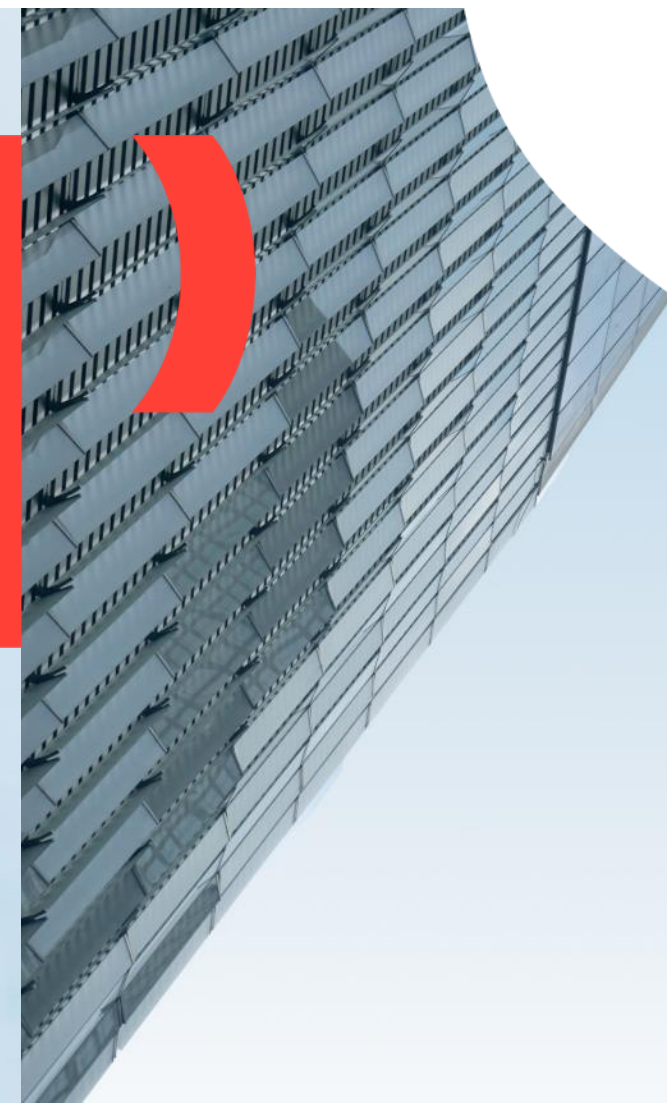
Muscat Conference

Monday, November 06, 2017, Crowne Plaza Muscat



Safe Access for All

Elie Ghossoub
Principal Consultant Health, Safety & Accessibility



Presenter

Elie Ghoussoub

Health, Safety & Accessibility Consultant – WSP

Elie Ghoussoub is a Principal Consultant for health, safety and accessibility for the built environment at WSP in the Middle East. Elie has conducted many accessibility audits and design reviews for commercial and public buildings. Elie has presented at a number of government forums, appeared in regional trade publications and continues to provide safety and universal accessibility advice to private and public clients.

Course Description

Universal Accessibility interfaces with the built environment in many areas, including safety, maintenance and facilities management. Today's presentation will discuss the main components of accessibility in the built environment and highlight the safety implications of inaccessible premises.

What is accessibility?



UN-CRPD Definitions

People with Disabilities

“... those who have long-term physical, mental, intellectual or sensory impairments which in interaction with various barriers may hinder their full and effective participation in society on an equal basis with others.”

Universal Design-Accessibility

“Is the design of products, environments, programs and services to be usable by all people, to the greatest extent possible, without the need for adaptation or specialized design”.

People with Disabilities

Athletes



Employees



People with Disabilities

Clients



People



Numbers

- 1 in 4 of today's 20 year-olds will have some form of disability before they retire
- 15-20% of the world's population has a disability
 - Hearing impairments
 - Mobility impairments
 - ***Parkinson's***
 - Vision impairments
 - Cognitive impairments
 - ***Autism***
 - ***Tourette's***
 - ***ADHD***
 - ***Dementia***

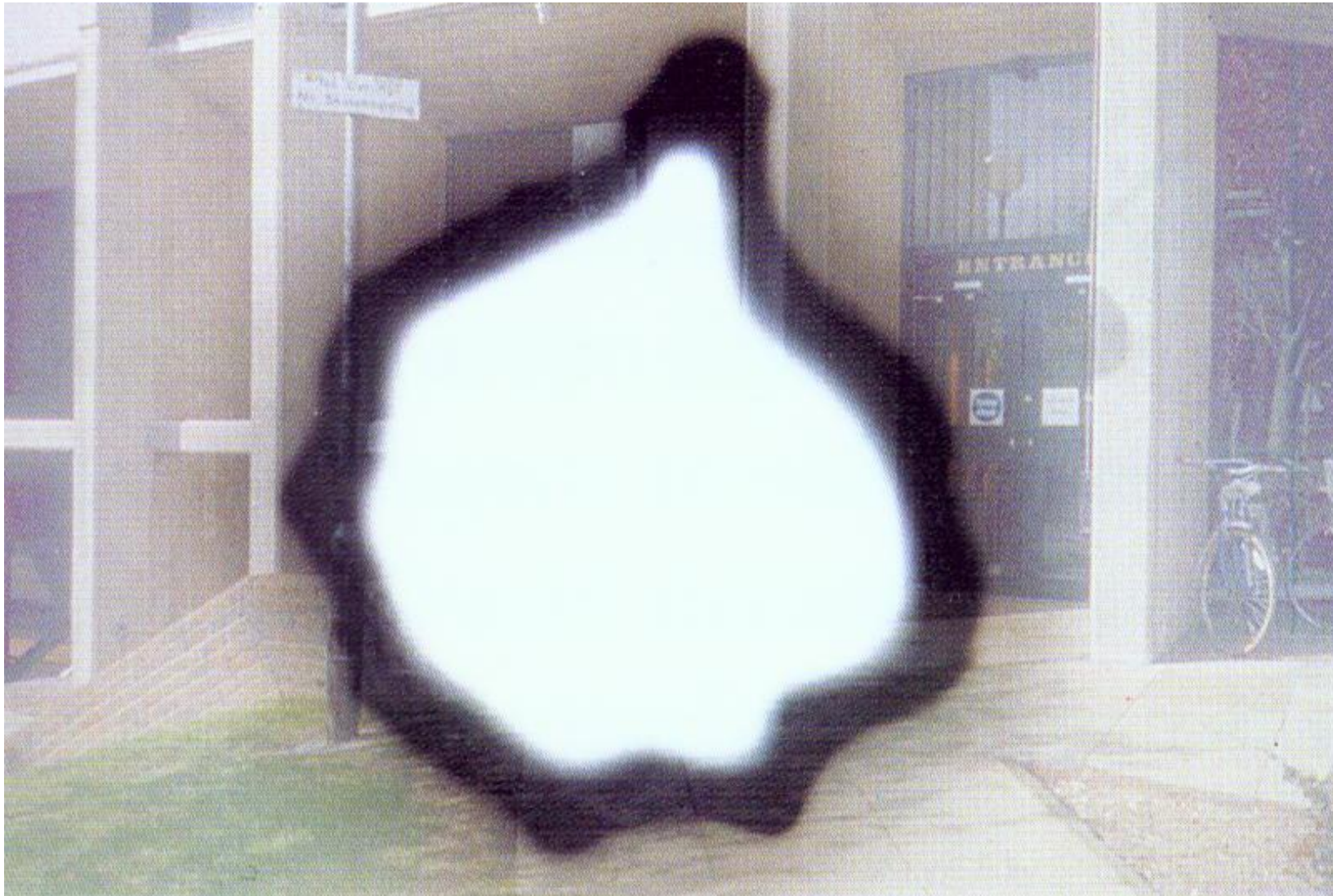


Visual Impairments:





Cataract



Macular Degeneration



Tunnel Vision



Accessibility in the Region



Legislative frameworks

- **Convention on the Rights of Persons with Disabilities (CRPD)**

- *UAE*

- *KSA*

- *Qatar*

- *Bahrain*

- *Oman*

- *Kuwait*

- **Change in approach**

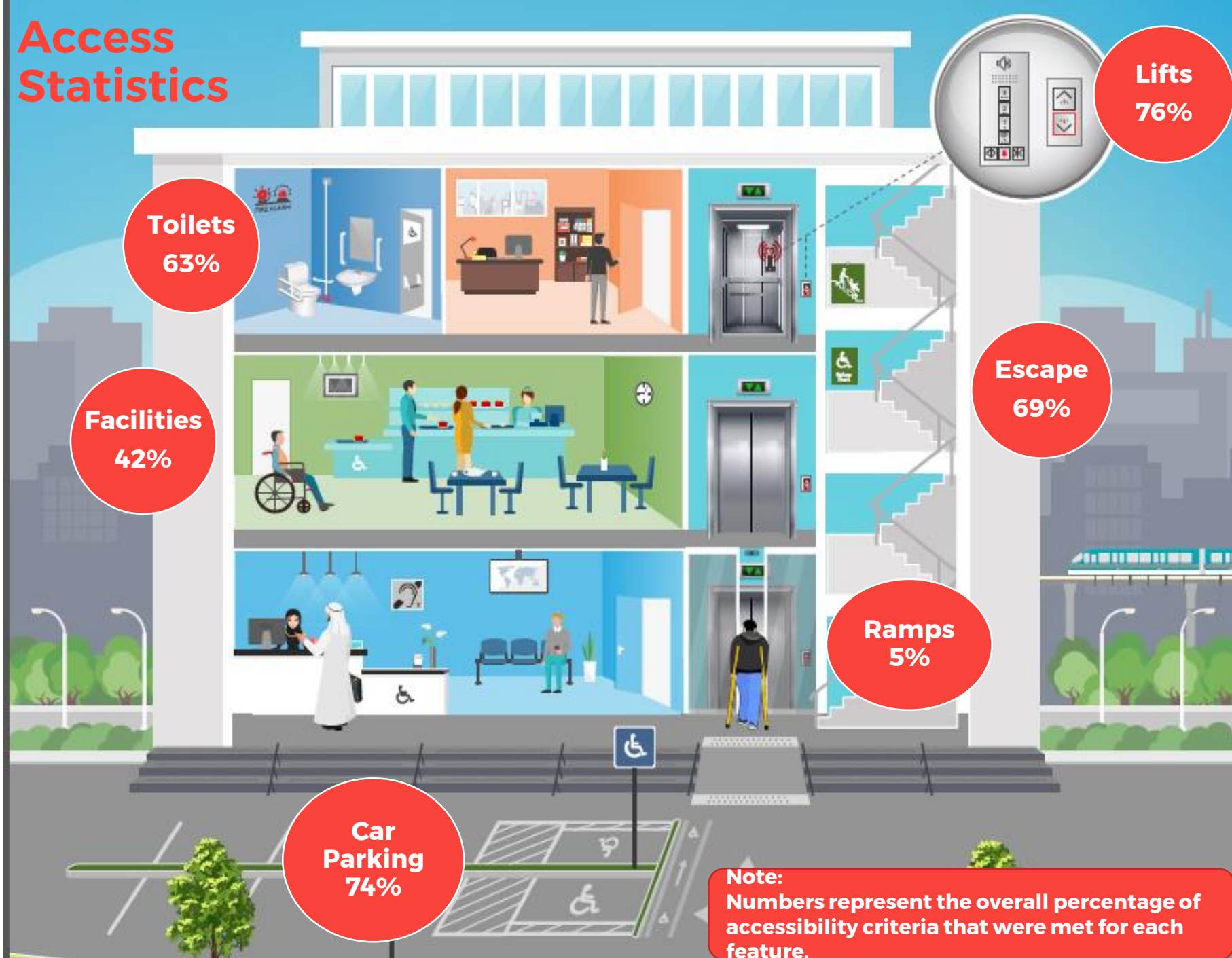
- *Charity/Medical Model*

- *Equality Model*

- **Laws & Regulations**



Access Statistics



Note:
Numbers represent the overall percentage of accessibility criteria that were met for each feature.

Accessibility In Practice



Accessibility in Buildings

- **Access to buildings**
- **Access into buildings**
- **Horizontal circulation**
- **Vertical circulation**
- **Facilities in buildings**
- **Emergency evacuation**

21

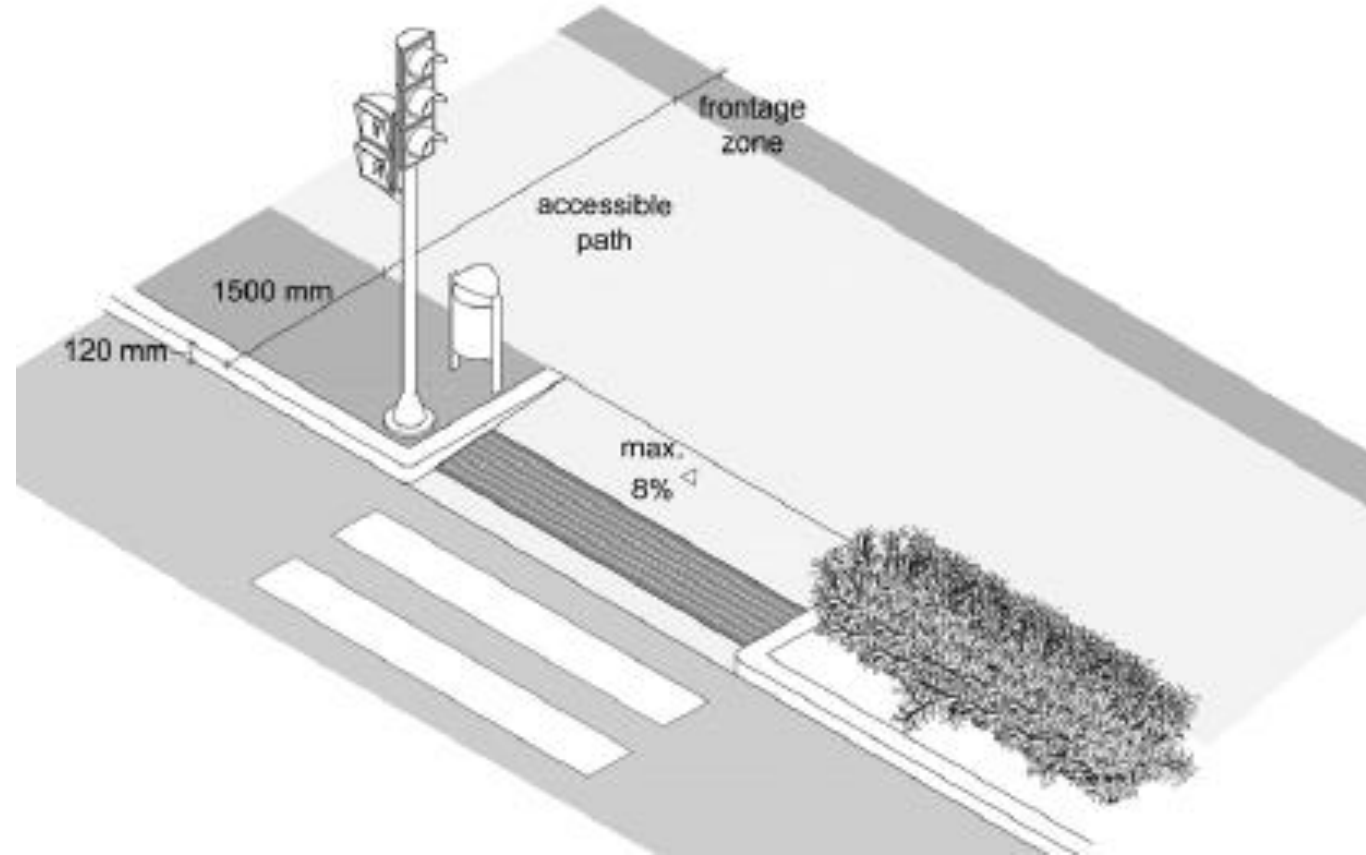


The Accessible Journey

22



Access to Buildings-Accessible Path



Access to buildings



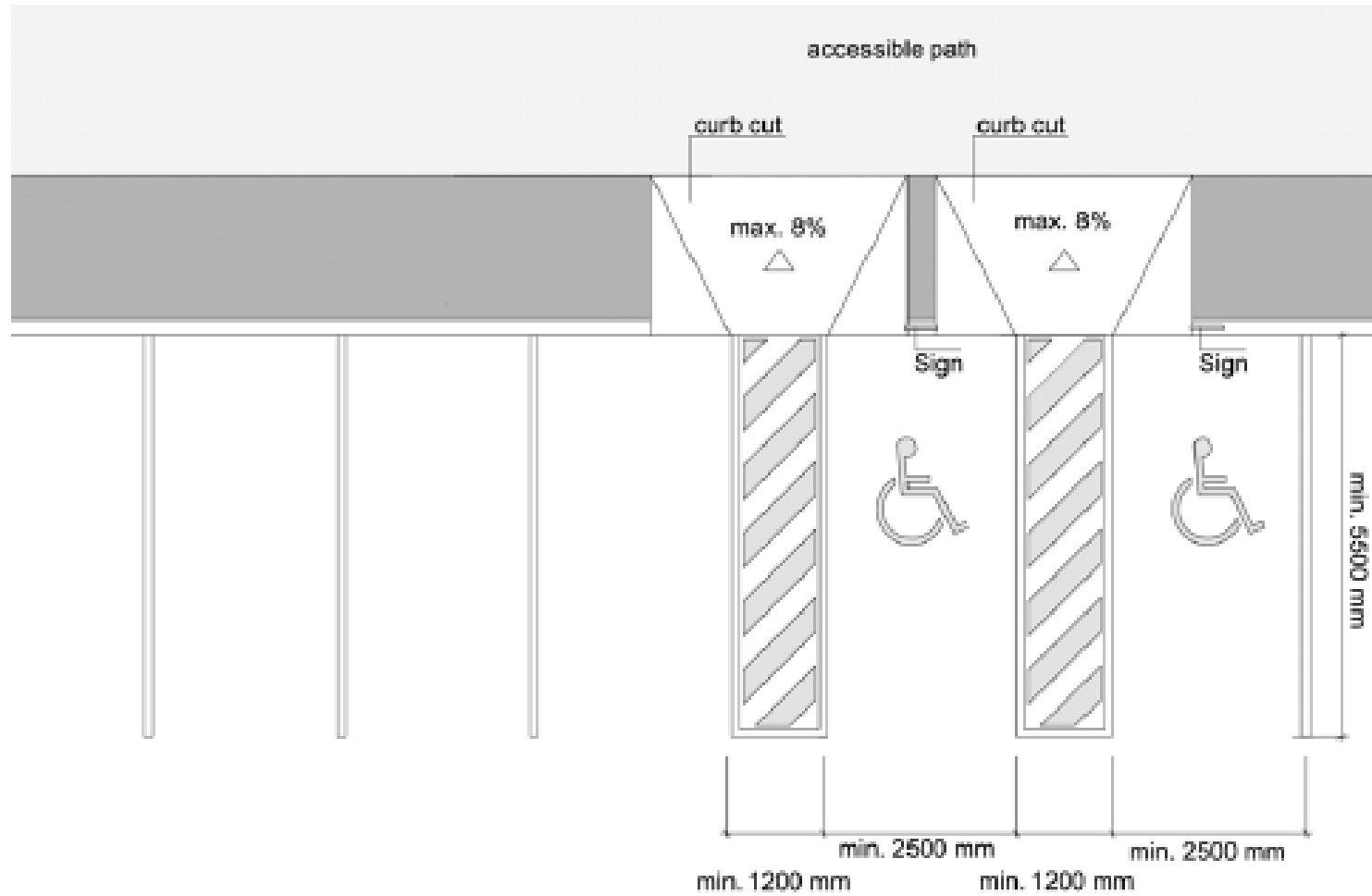
Access to buildings



Access to buildings



Access to buildings-Parking



27

Access to buildings



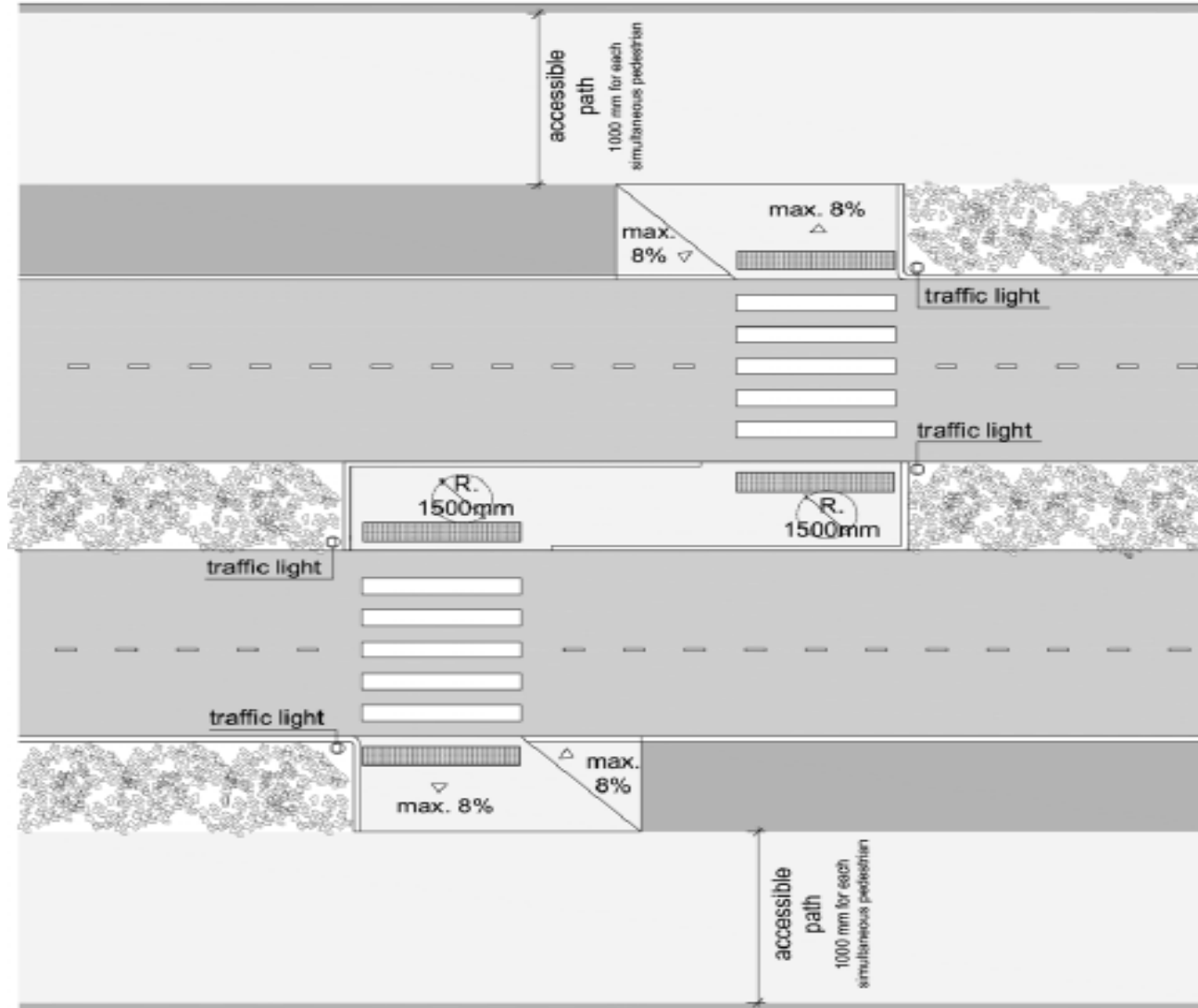
Terminology

29



Access to buildings-Crossing Points

30



Access to buildings

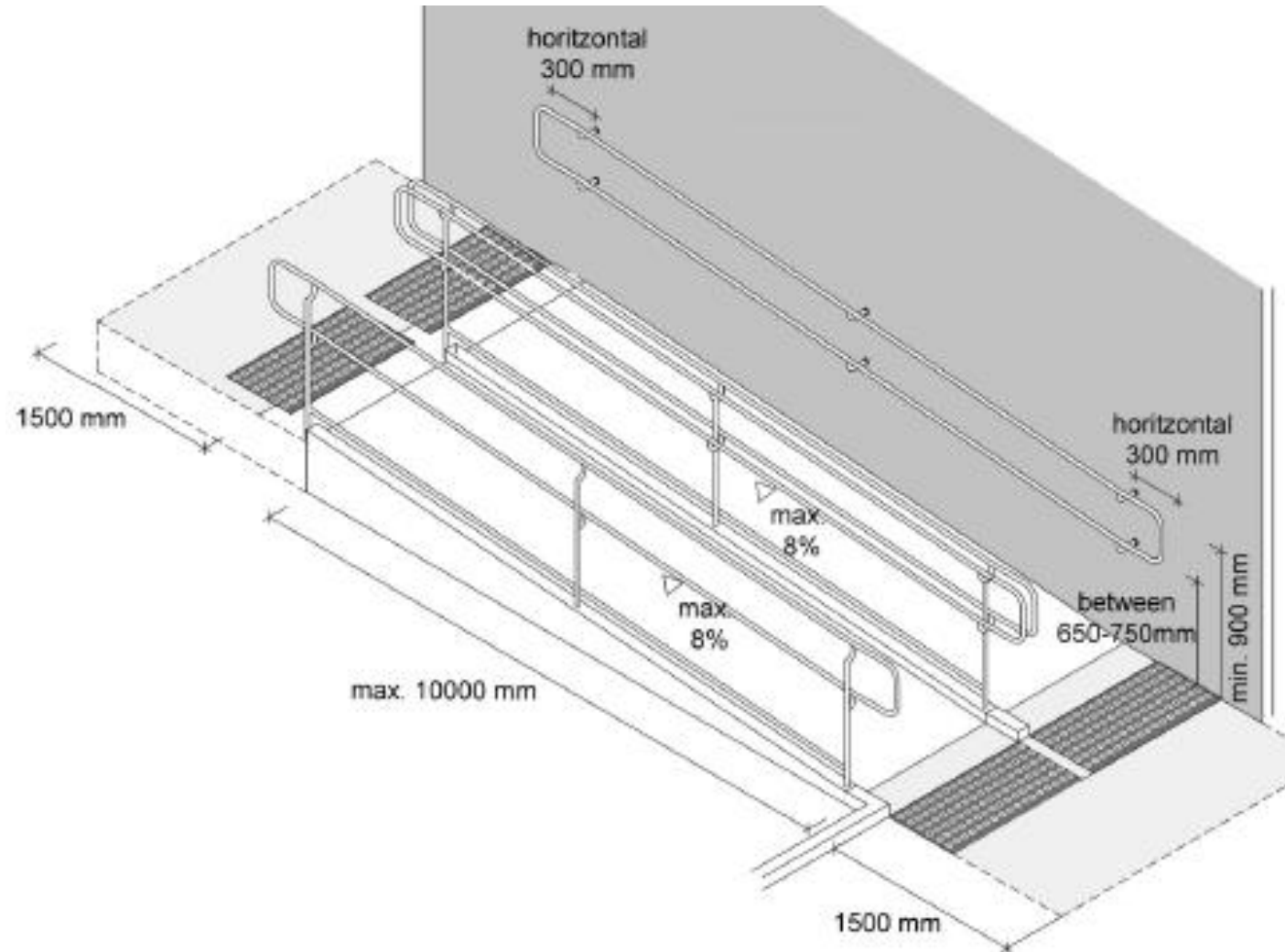


Access into buildings



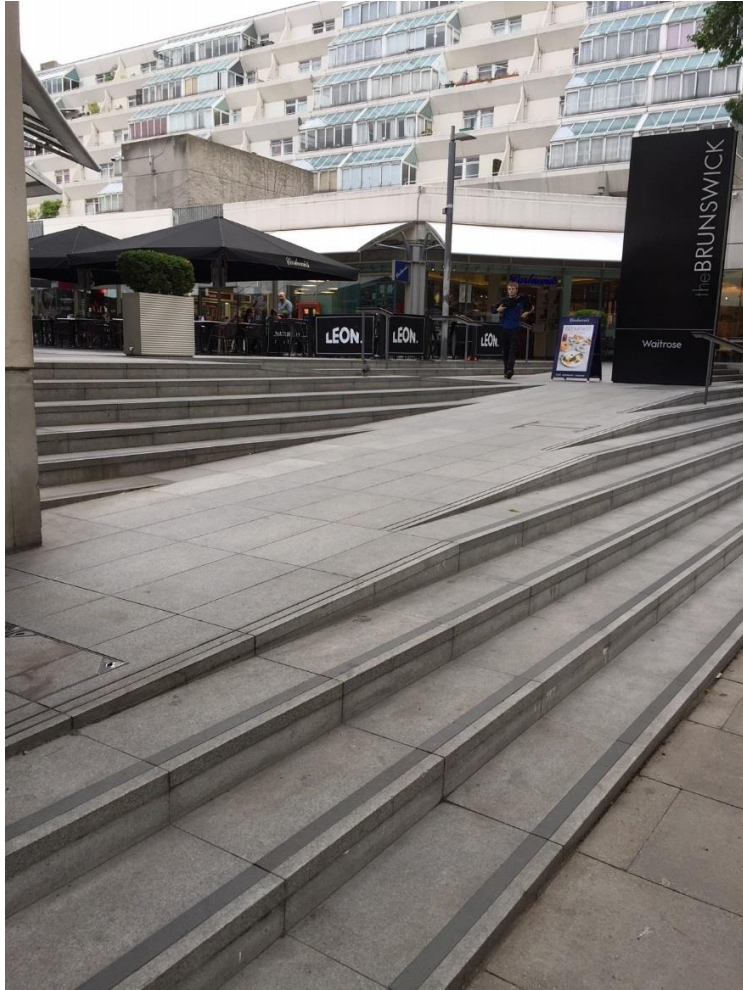
32

Access into buildings-Ramps



Access into buildings

34



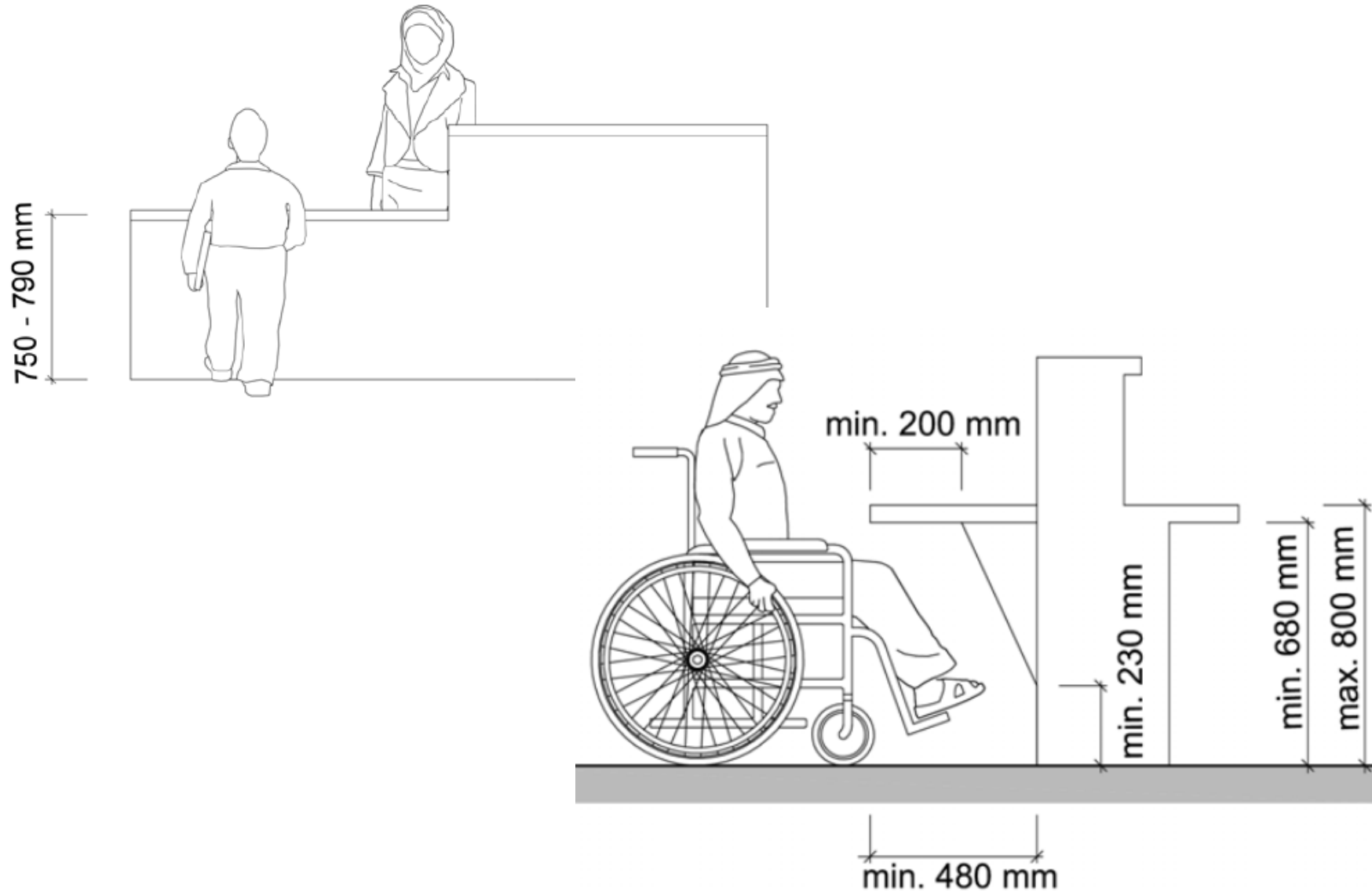
Access Into buildings

35



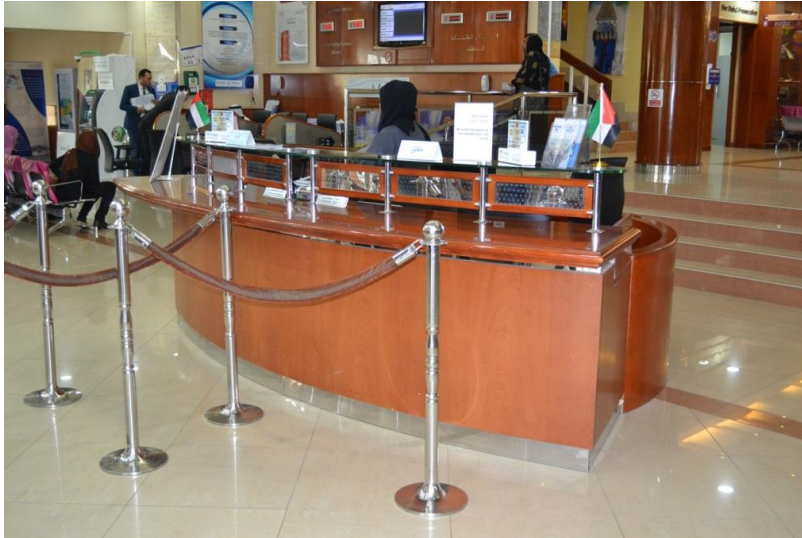
Access into Buildings-Receptions

37

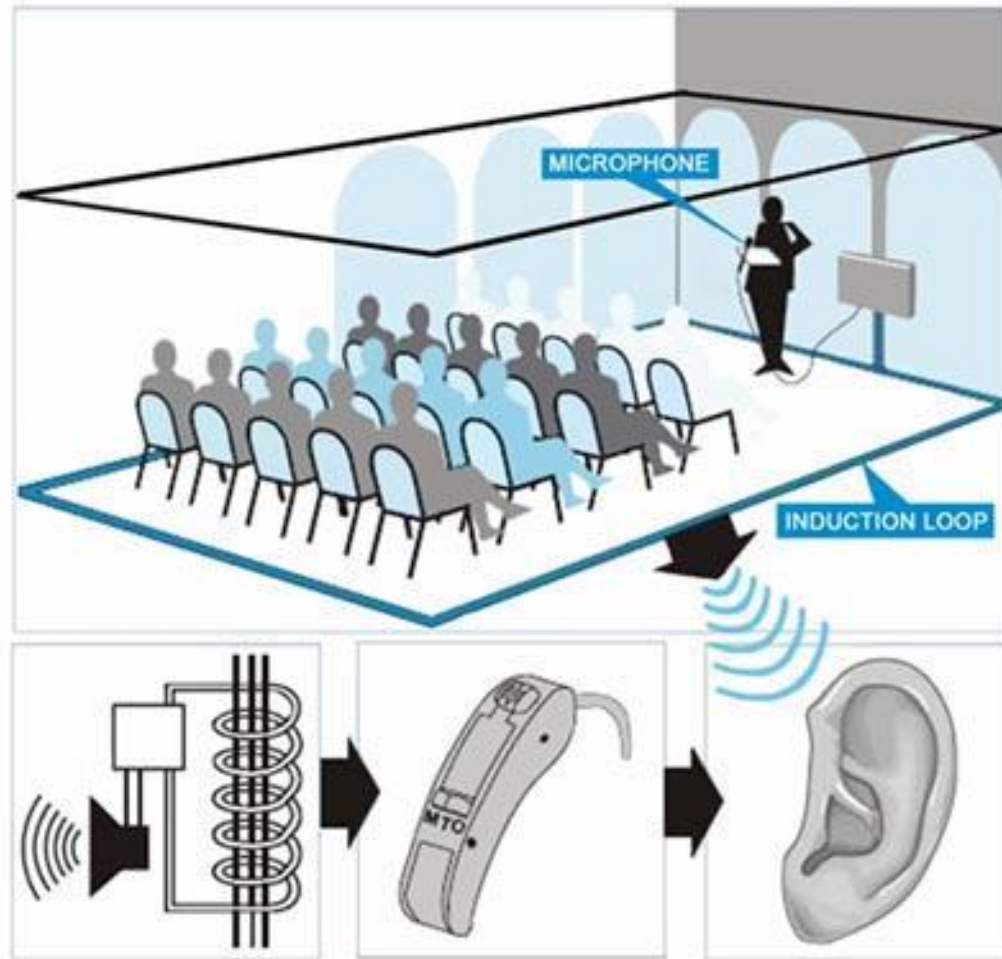


Access Into Building

38



Access into Buildings-Receptions

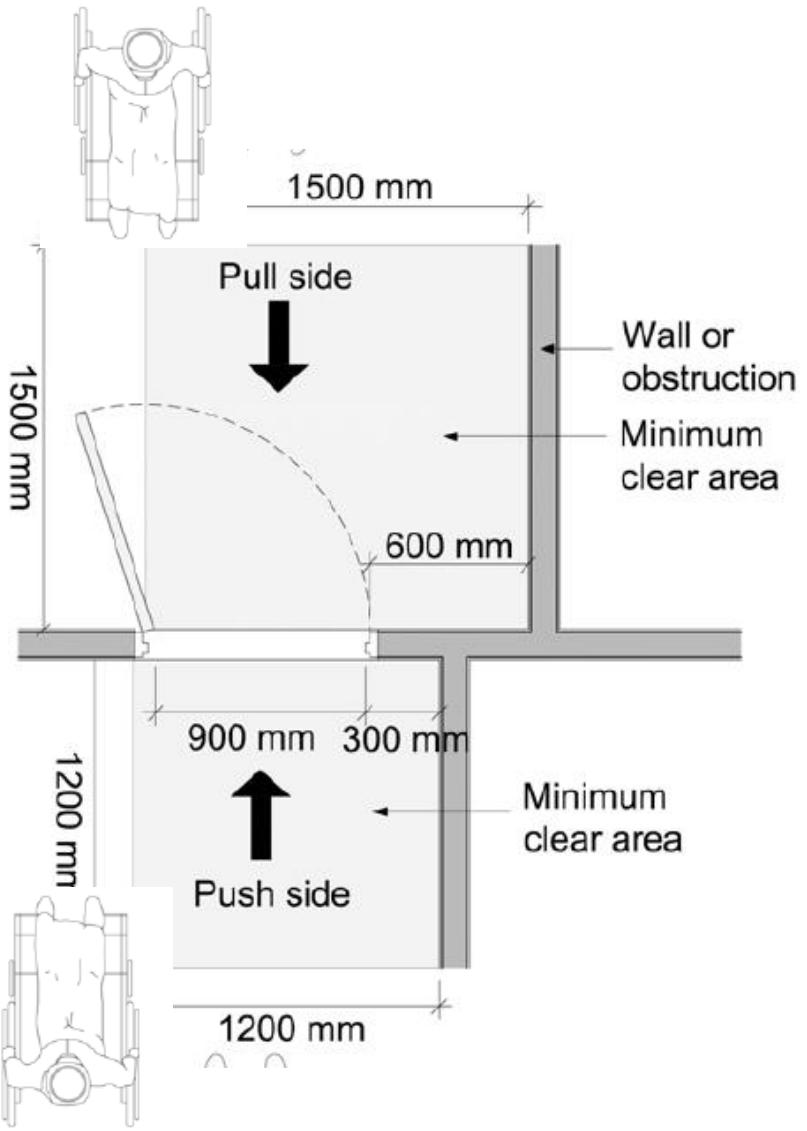


Hearing Loop
Switch hearing aid to T-coil

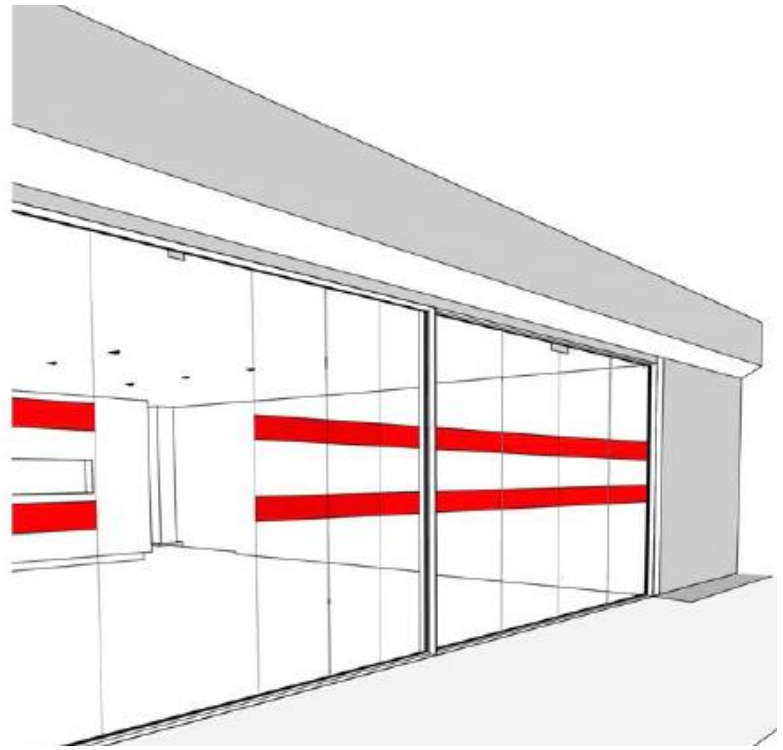


Horizontal Circulation-Doors

40



Manifestations



Horizontal circulation

42

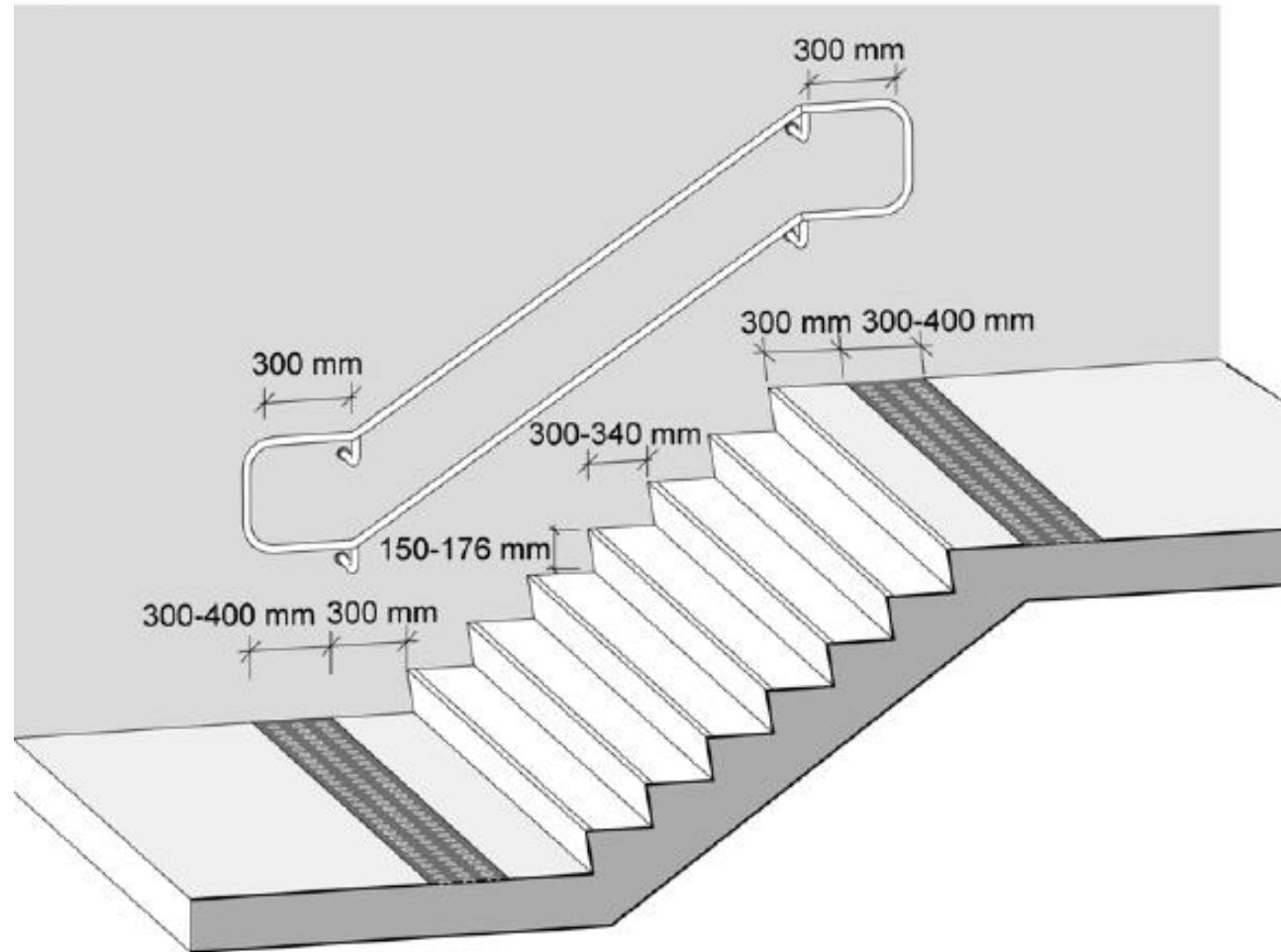


Horizontal circulation



43

Vertical Circulation-Stairs



Vertical Circulation

45



Vertical Circulation



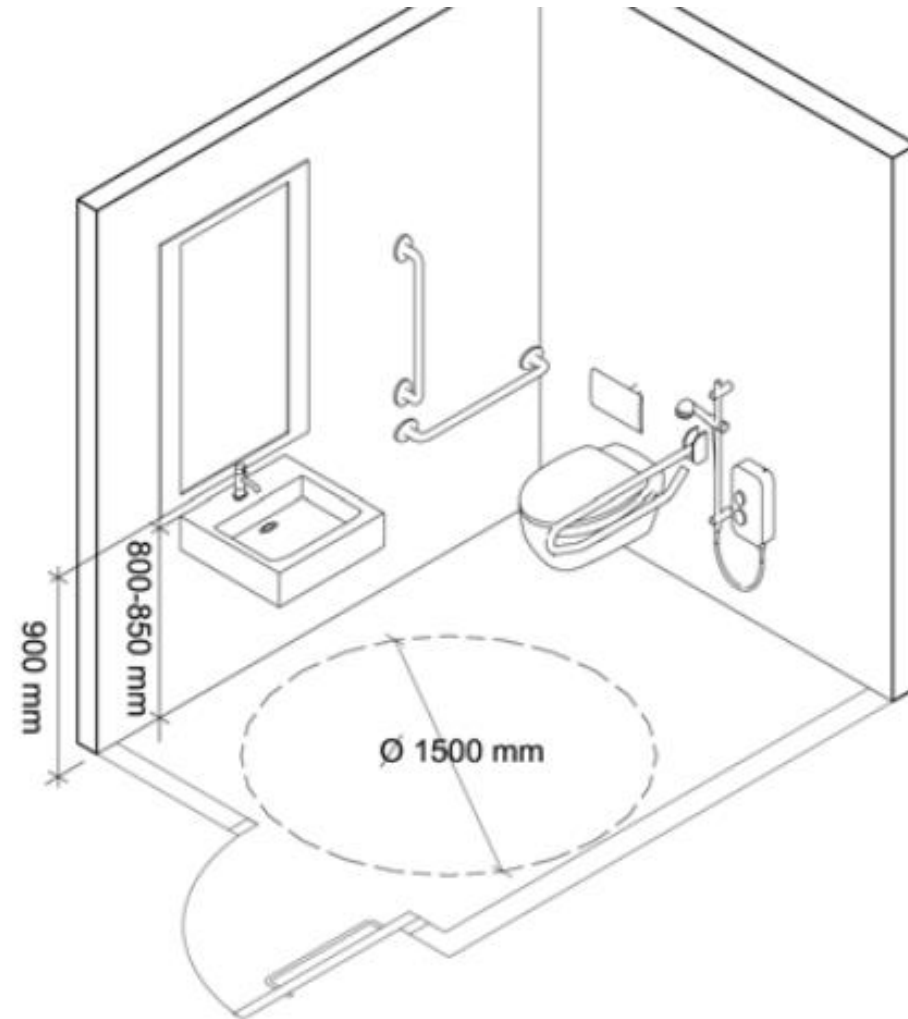
Vertical Circulation-Elevators



47

Facilities in Buildings-Toilets

48



Facilities in Buildings



Facilities in buildings

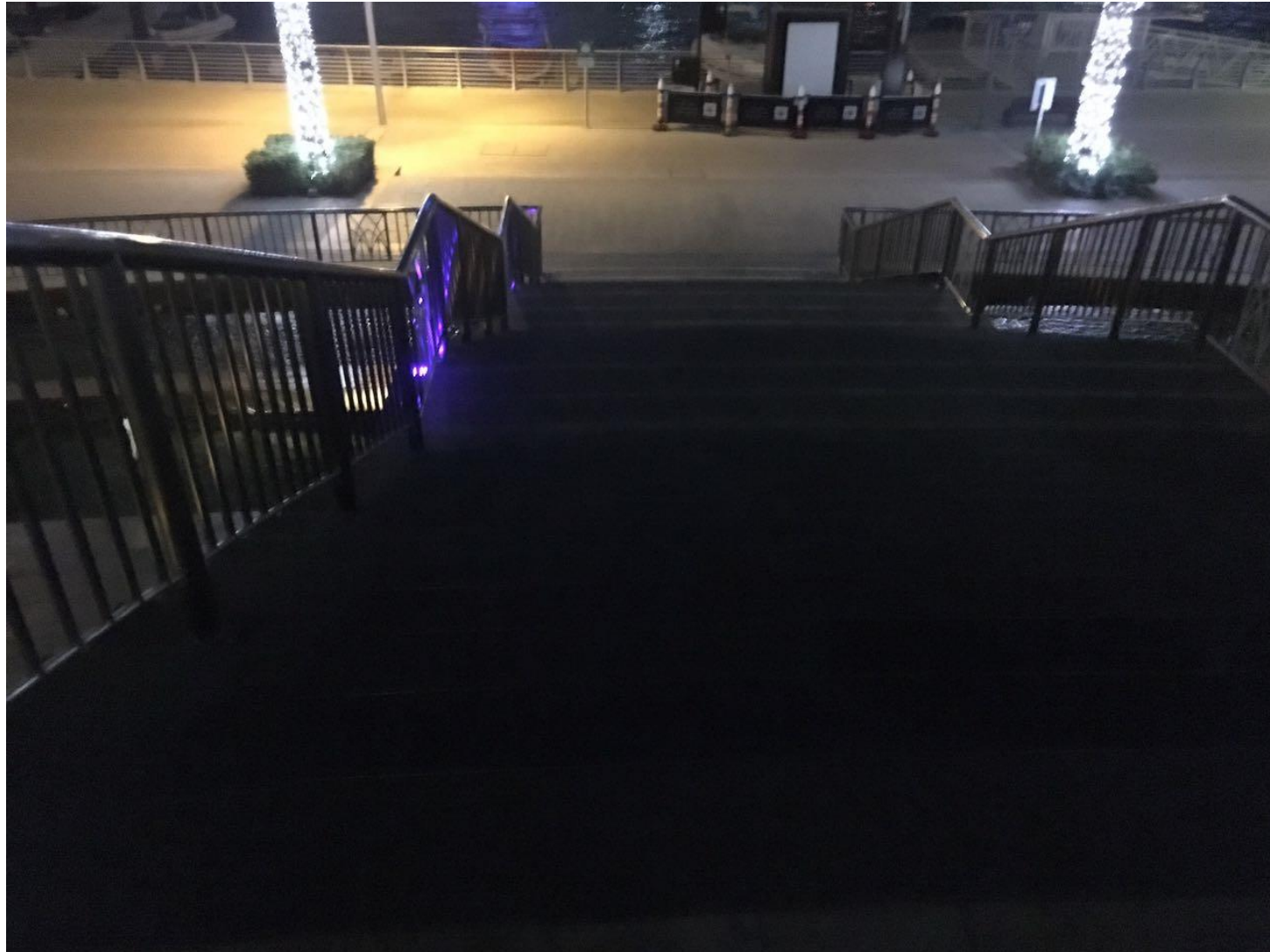
50



Finishes & Lighting



Finishes & Lighting



Emergency Evacuation

How do you get people with disabilities out of a building?

Emergency Evacuation



54



Thank you!

wsp.com

wsp